



Contrasting responses to diversity: school placement trends 2007-2013 for all local authorities in England

Researched and written by:
Dr Alison Black and Professor Brahm Norwich



**Contrasting responses to diversity:
school placement trends 2007-2013 for all local authorities in England**

Researched and written by Dr Alison Black and Professor Brahm Norwich
Graduate School of Education
University of Exeter
St Luke's Campus, Heavitree Road, Exeter EX1 2LU

Edited for CSIE by Artemi Sakellariadis

Designed by Jen Watts Design

Published by
Centre for Studies on Inclusive Education (CSIE)
The Park Centre, Daventry Road, Bristol BS4 1DQ
tel: 0117 353 3150
fax: 0117 353 3151
email: admin@csie.org.uk
web: www.csie.org.uk

© Copyright CSIE 2014

A catalogue record for this book is available from the British Library

ISBN 978-1-872001-73-9



The Centre for Studies on Inclusive Education (CSIE) is a registered charity that works to promote equality and eliminate discrimination in education. Founded in 1982, the Centre has been at the cutting edge of educational change for over 30 years. We believe that everyone is of equal value, regardless of age, impairment, gender, gender identity, sexual orientation, ethnicity, religion or belief. We work towards raising public awareness and transforming education so that everyone can feel welcome, visible and respected in ordinary local schools. In addition to research activities, CSIE produces a wide range of resources, provides training & consultancy and engages in lobbying & campaigning. The Centre receives no regular funding; its income comes from sales of resources & services and from charitable grants & donations. For more information please see www.csie.org.uk.

Registered charity 327805

Registered company 2253521



Foreword

Welcome to this new issue in CSIE's *Trends* series. This report looks at school placement trends of all local authorities in England for the years 2007-2013. Like other *Trends* reports before it, it reveals huge variation in the way local authorities respond to diversity; some rely more on ordinary local schools, while others regularly send high proportions of children to separate special schools.

What is expected of ordinary schools has changed over time and, as this report confirms, professional opinion continues to vary. Until the 1960s, children and young people categorised as “educationally subnormal (severe)” were thought to be “ineducable”; provision for them was made by Health Authorities, mostly in Junior Training Centres. The Education Act of 1970 transferred responsibility for these children to Local Education Authorities, on the understanding that nobody is ineducable, and many Junior Training Centres got renamed as “special schools”. A decade later, the Education Act 1981 stated that every child has a legal right to be educated in a mainstream school, as long as a number of conditions are met. The specific conditions have been changed over time by further legislation, but the basic entitlement remains. In practice, however, this continues to be understood, and applied, differently in different local authorities.

We hope that clear and detailed information on what routinely happens in neighbouring or distant local authorities will be of interest to parents, education professionals and campaigners alike. It can help people reach better informed decisions about individual children's school placements. It can also empower people to take action and to lobby for change in their local area.

Local authorities interested in helping ordinary schools to include more disabled children may be interested in CSIE's resource “The Welcome Workbook: a self-review framework for expanding inclusive provision in your local authority”, available from CSIE with publisher's discount.

We are deeply indebted to Dr Alison Black and Professor Brahm Norwich who have devoted much of their time and energy to this project. Without their commitment, determination and creative responses to the multitude of challenges encountered on the way, this research could not have been completed. Our heartfelt thanks go to them.

Many thanks are also due to the Esmée Fairbairn Foundation, for appreciating the importance of this work and providing the funding for it.

We welcome your comments and encourage you to contact us at admin@csie.org.uk or through our Facebook and Twitter pages.



Artemi Sakellariadis
Director, CSIE



Introduction

This report provides information on the percentage of pupils placed in special schools since 1983 and the population of special schools and units in England between the years 2007 and 2013. The report also ranks all local authorities in England from the most inclusive to the most segregating.

The main part of the report considers the proportion of children and young people sent to special schools by each local authority over the past six years. It shows, for each local authority, for children aged 0-19 for whom the local authority maintains a statement, the proportion that has been sent to maintained, non-maintained and independent special schools, within or outside the local authority's boundaries, expressed as a percentage of all children and young people aged 0-19 in that authority.

The report also explores rates of change in school placement trends and reveals the local authorities that have shown the most significant change a) towards more inclusive provision in ordinary local schools and b) towards more segregating provision in special schools. CSIE has invited comments from local authorities showing such significant changes and, where available, these comments have been included in this report.

Additional tables in the appendix provide more detailed information on school placements for each local authority in England, listed in alphabetical order. For each of the years 2007, 2009, 2011 and 2013, these tables indicate the proportion of pupils aged 0-19 who have a statement of special educational needs and are placed in:

- i. maintained, non-maintained & independent special schools and special academies
- ii. special units, classes or resource bases attached to ordinary schools¹
- iii. pupil referral units (PRUs) and alternative provision academies
- iv. any provision off site ordinary schools (i+iii)
- v. any separate provision on and off site of ordinary schools (i+ii+iii)

The school place for each child who has a statement of special educational needs is determined by local authority officers, who have to take into account the views of the child and their parents, as well as the views of a wide range of professionals. CSIE has been reporting on local authorities' school placement trends since the 1980s. The Department for Education publishes information at national level, but local variation is only obvious by analysis at local authority level, which is unique to the CSIE analysis.

Even though every local authority has to comply with the same laws and national policies, CSIE *Trends* reports have brought to light significant local variations. This report shows that as many as 1 in 100 children are regularly sent to special schools in one local authority, but only 1 in 500 in a neighbouring authority of similar size. Such extreme differences in the way local authorities respond to diversity bear no simple relation to the size of the local authority or its social or geographical characteristics. Instead, they are more likely to reflect a combination of factors including differences in strategic leadership and commitment to inclusive education.

¹ We acknowledge that pupils who have statements and are recorded as attending units, classes or resource bases on-site of ordinary schools are not necessarily segregated from their peers, and that their experience will vary from school to school.

This report forms part of a longitudinal study which started in 1983. This is the seventh analysis, for the years 2007-2013. It is based on information collected by the Department for Education on SEN2 forms, combined with population data from the Office for National Statistics. It follows earlier analyses conducted for CSIE by Will Swann (Open University), Brahm Norwich (University of Exeter) and Sharon Rustemier/Mark Vaughan (CSIE). However, due to differences in the information available for these analyses, findings are not directly comparable. The differences between the three most recent analyses are summarised in table 1 below.

The City of London and The Isles of Scilly are not included in this report because their small size makes the figures statistically insignificant. Some local authority reorganisation took place during the period under review and these changes are reflected in the report. In 2009 Bedfordshire County Council became the unitary authorities of i. Central Bedfordshire and ii. Bedford. In the same year Cheshire County Council became the unitary authorities of i. Cheshire East and ii. Cheshire West and Chester. Five local authorities changed from being county councils to unitary authorities in 2009. These are Cornwall, Durham, Northumberland, Shropshire and Wiltshire. (Where we refer to authority types in the report we use post 2009 status.)

	Norwich (2002)	Rustemier & Vaughan (2005)	Black & Norwich (2014)
Years examined	1997-2001	2002-04	2007-13
Age of pupils	5-15	0-19	0-19
Pupils included in the analysis	Pupils who are the responsibility of the LA (all pupils), and placed in settings below	Pupils for whom the LA maintains a statement and are placed in settings below	Pupils for whom the LA maintains a statement and are placed in settings below
Placements examined	Percentage of pupils in: <ul style="list-style-type: none"> (maintained, non-maintained and independent) special schools 	Percentage of pupils in: <ul style="list-style-type: none"> (maintained, non-maintained and independent) special schools other independent schools hospital schools PRUs other independent schools pupils educated other than at school and permanently excluded pupils educated other than at school under arrangement by the LA 	In main part of report Percentage of pupils in: <ol style="list-style-type: none"> (maintained, non-maintained and independent) special schools and special academies In appendix Percentage of pupils in: <ol style="list-style-type: none"> special units, classes or resource bases attached to ordinary schools PRUs and alternative provision academies and v. combinations of the above

Table 1 Comparison of data used in previous and in current analyses



Trends over time

This section compares earlier trends to the current picture and considers the extent to which local authorities in England rely on special schools for the education of children with statements of special educational needs. This gives some indication of the development of inclusive education for these children and young people across England in the past six years.

It is important to remember that the three sets of figures are not directly comparable, because of differences in the information available for these analyses. Nonetheless, the trend lines give a sense of overall patterns of inclusion. (The black continuous lines are trend lines, and show where figures would be expected to fall if the actual data patterns continued.)

Figure 1 shows the the general trend of the proportion of pupils in special schools falling until 2007, with evidence of some plateauing in the early 2000s. Since 2007 the proportion of pupils in special schools appears to be rising, albeit slightly.

The apparent drop in pupil numbers between 2001 and 2002 probably reflects the difference in the information available and the way this has been processed. Rustemier and Vaughan’s 2005 data includes children aged 0-4 and 16-19 which the previous data set did not use. This means that the number of pupils in special schools were calculated as a proportion of a larger whole, which makes the percentage lower. Likewise, the drop in pupil numbers between 2004 and 2007 is also likely to reflect the different formulae used in these calculations – our current analysis only reports on pupils in special schools, whereas the 2005 analysis reported on the proportion of pupils in all separate settings.

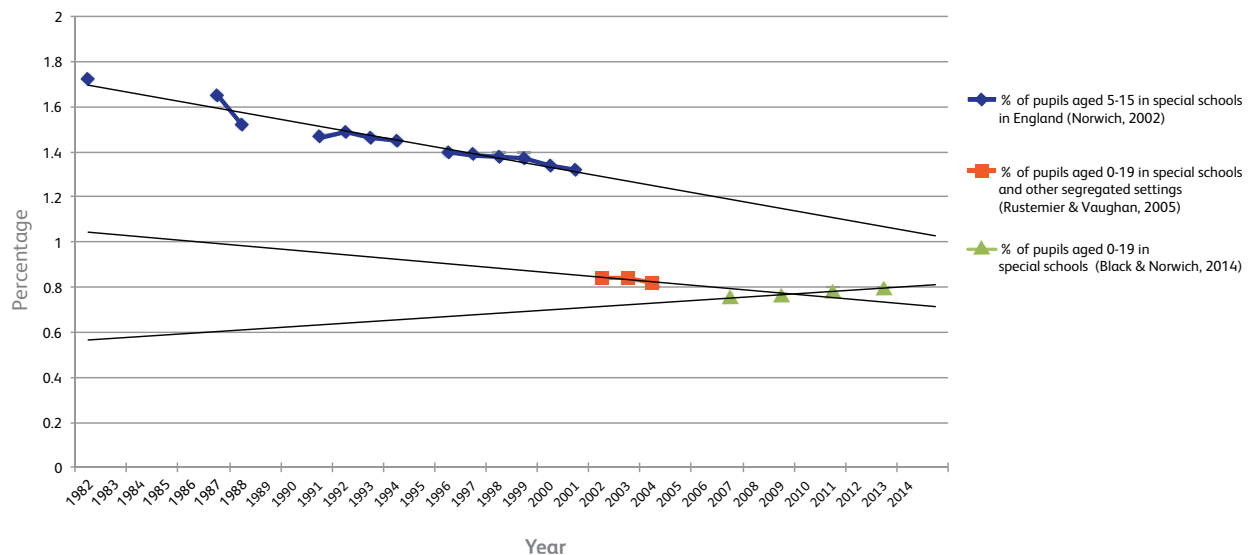


Figure 1 Percentage of pupils in separate settings in England 1983-2013



Proportions of pupils in special schools 2007 - 2013

This section looks at how local authorities in England place pupils for whom they maintain a statement in special schools in the years 2007 to 2013. The national and local percentages show the proportion of children aged 0-19 placed in special schools, calculated as a percentage of the total population of this age. (The complete formula can be seen in the method and data accuracy section on page 21.)

The reported data is based on the number of children and young people for whom the LA is responsible, who are aged 0-19 and have a statement of special educational needs; it includes the following types of special schools:

- a. Maintained special schools
- b. Non-maintained special schools
- c. Independent special schools
- d. Special academies and free schools (where applicable – 2013 only)²

It does not include pupils with statements who go to independent schools that are not special schools.

The figures reported in this section do not include the number of pupils in any other separate setting, such as PRUs or resourced provision/SEN units on site of maintained schools.

The data supplied by the Department for Education in the SEN2 forms takes account of “out of authority” placements; in other words it includes the number of pupils placed in other LAs’ schools and excludes numbers of pupils from other LAs whom each LA educates within its own schools. This negates the need to collect separate data on “imports” and “exports” as has been done in previous analyses, as the information made available to us accurately reflects how an LA has placed the pupils for whom it is responsible.

A small national increase in special school placements

The proportion of pupils placed in special schools has risen slightly over the years examined in this study. In 2007 it was 0.75 %, gradually rising to 0.80 % in 2013 (see figure 2).

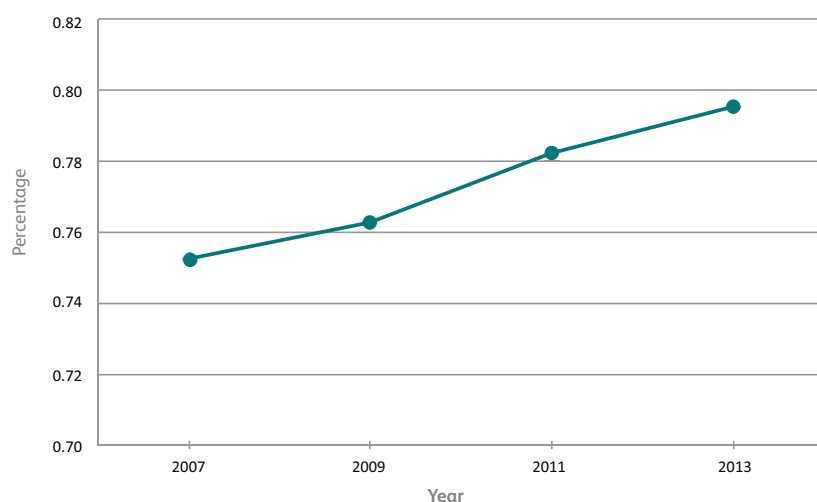


Figure 2 Percentage of 0-19 population given a statement and placed in special schools 2007-2013

² A detailed account of the formula used can be found in the method and data accuracy section on page 21.

This small 0.04%³ increase in the proportion of students placed in special schools represents an increase of 8,745 placements in special schools, from 92,845 pupils in 2007, to 101,590 pupils in 2013 (see figure 3 below).

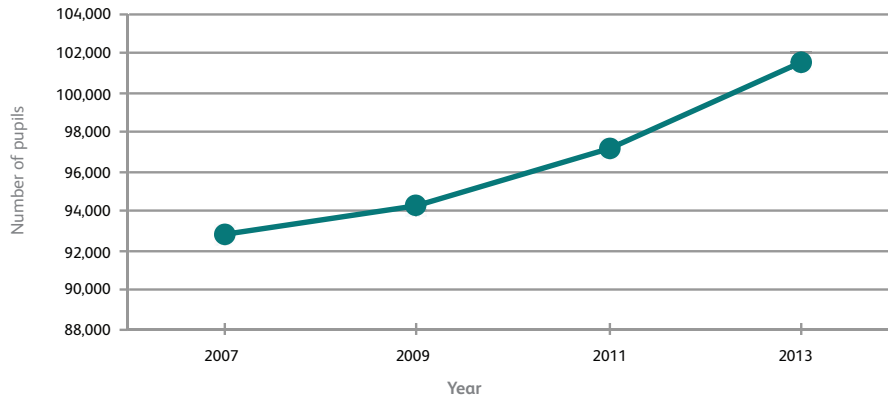


Figure 3 Number of pupils given a statement and placed in special schools, 2007-2013

The increase in placements in special schools occurs against a smaller rise in the total 0-19 population across the country (see Figure 4). The 0-19 population increased from 12,337,548 in 2007 to 12,771,115 in 2013, an increase in population of 433,567 (3.5%). When compared to the 4.6% increase in placements in special school (the increase of 8,745 placements shown in Figure 2 above) this is another way of showing a modest trend towards segregation.

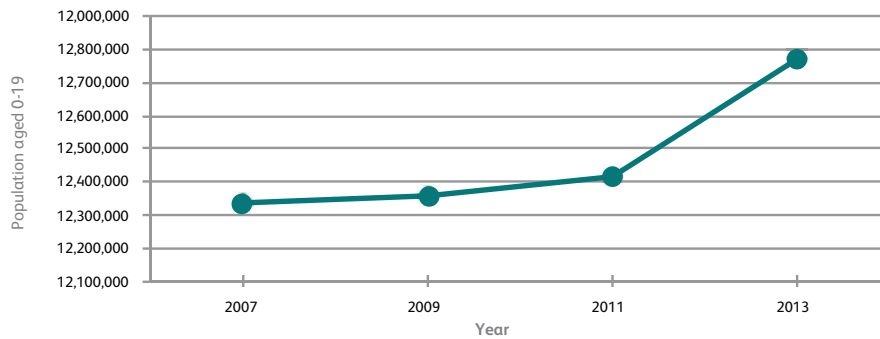


Figure 4 0-19 population in England 2007-2013

³ based on values before rounding to 2 decimal places



Local authority variations

The London borough of **Newham** had the smallest proportion of pupils in special schools in each of the four years studied. Newham has been the LA with the smallest percentage of pupils in the segregated settings considered since 1999 (Norwich, 2002; Rustemier & Vaughan, 2005). **Wirral**, a metropolitan authority, had the largest proportion of pupils in special schools in 2007, 2009 and 2011 (1.35%, 1.37% and 1.27% respectively), but was replaced by **Torbay**, a unitary authority, in 2013 (1.40%).

In 2007 Newham had 1 in 500 pupils placed in special schools, compared to 1 in 74 in Wirral. In 2009 Newham was responsible for 1 in 556

Three of the LAs with the smallest proportion of pupils in special schools were in the highest five positions for the period 2007-13 – **Newham**, **Rutland** and **Cornwall**. **Newham** had the smallest proportion for all four years examined. **Cumbria** and **Somerset** were in the top 5 position for two years, **City of York** for three (York was ranked 8th in 2007). **Somerset** was ranked 9th in 2007, 8th in 2009 and 5th in 2011 and 2013. **Cumbria** moved from the top 5 position it held in 2007 and 2009 to 6th position in 2011 and 8th in 2013. **Leeds** fell from being ranked in 6th place in 2007 (0.46%) to 11th in 2009, 14th in 2011 and 12th in 2013 (0.51%, 0.53% and 0.53%).

“We believe that children and young people should be helped to live as independently as possible, so that they are more resilient in adult life. We take into account legislative guidance that children should normally be educated in mainstream schools and place high importance on engaging parents in our discussions about school placements.

We believe that every school should be inclusive and have maintained a programme of long term investment to make our schools accessible for disabled children. We also support the development of SEN Co-ordinators (SENCOs) and work closely with schools to ensure that inclusive education arises from our shared ethos and supported practice. We acknowledge that providing for children with SEN in schools can be challenging, but remain committed to our belief that the needs of children, not the needs of an institution, should drive our decisions.”

James Hourigan
Head of Inclusion and Behaviour Support
London Borough of Newham

of pupils placed in special schools, compared to 1 in 73 in Wirral. 1 in every 455 pupils in Newham were placed in special schools in 2011, in Wirral it was 1 in every 79. Torbay had 1 in every 71 pupils in special schools in 2013, whereas in Newham it was 1 in every 500.

Table 3 on page 9 shows the proportion of pupils sent to special schools for all local authorities in England, arranged in order of smallest to largest proportion for each year examined.

13 local authorities appeared in the top 20 LAs with the smallest proportion of pupils in special schools for all four years explored in this study. Those which were consistently in the top 20 are **Newham**, **Rutland**, **Cornwall**, **Cumbria**, **Leeds**, **Nottingham**, **City of York**, **Somerset**, **East Riding of Yorkshire**, **Nottinghamshire**, **Derbyshire**, **Havering** and **Barnet**. Four of these are county authorities, five are unitary authorities, three are London boroughs and one is a metropolitan authority.

All LA types are represented in the top 5 local authorities with the smallest proportion of pupils in special schools over the years looked at in the study. However, the metropolitan authorities in the top 10 (Barnsley and Leeds) are only there for 2007, after this year there are no metropolitan authorities represented in the top 10.

12 authorities had a proportion of students in special schools below the 0.5 % mark in 2007. This fell to ten in 2009, nine in 2011 and five in 2013.

Wirral, Knowsley and South Tyneside were among the five authorities with the largest proportion of pupils in special schools, for the four years looked at in this study. **Torbay** was ranked 142nd in 2007 (1.12 %), 141st in 2009 (1.11 %), 148th in 2011 (1.20 %) and 150th (out of 150) in 2013 (1.40 %). **Middlesborough** also appeared among the five most segregating authorities in 2013, falling from 137th position in 2007, to 138th in 2009, 141st in 2011 and 148th in 2013 (from 1.6 %, 1.09 %, 1.12 % to 1.23 %). **Stoke-on-Trent** rose from being in the five most segregating LAs in 2007 and 2009 (1.17 % and 1.18 %) to 144th position in 2011 (1.13 %) and 138th position in 2013 (1.10 %).

Brighton and Hove, although one of the five most segregating authorities in 2007 (1.14 %) did not appear in the 20 LAs with the largest proportion of pupils in special schools in any of the following years examined. **Salford** appeared then disappeared from the list of five LAs with the largest proportion of pupils in special schools. In 2007 it was ranked 135th (1.05 %), it fell to 144th position in 2009 (1.13 %), 147th in 2011 (1.17 %), then rose to 135th position in 2013 (1.04 %).

12 local authorities appeared among the 20 LAs with the largest proportion of pupils in special schools over all four years looked at. Those which were consistently in this list of LAs are **Wirral, South Tyneside, Knowsley, Stoke-on-Trent, Torbay,**

Coventry, Stockton-on-Tees, Wolverhampton, Middlesborough, Durham, Salford and Southend-on-Sea. Six of these are unitary authorities, six are metropolitan authorities. There are no London boroughs or county authorities consistently represented across the four years explored.

However, there are two London authorities, **Bexley** and **Croydon** who appear three times among the 20 with the largest proportion of pupils in special schools. This contrasts with three London authorities, **Newham, Barnet** and **Havering**, who appear four times among the 20 with the smallest proportion of pupils in special schools. This shows the extent of variation between London authorities in their proportions of pupils in special schools.

No county authorities appeared among the 20 LAs with the largest proportion of pupils in special schools until 2013, when four appeared – **Staffordshire** (1.05 %), **Lincolnshire** (1.04 %), **Buckinghamshire** (1.03 %) and **Warwickshire** (1.02 %). There are no London boroughs or county authorities among the five local authorities with the largest proportion of pupils in special schools over the years looked at in the study.

Seven authorities had more than 1.10 % of pupils in special schools in 2007, rising to eight in 2009, 10 in 2011 and 12 in 2013.

When the type of LAs appearing among the 20 with the largest and smallest proportions of pupils in special schools is considered, some interesting disparities emerge; these are summarised in table 2. County authorities are found more frequently in the group with the smallest than the group with the largest proportion in special schools. There is a similar pattern for London authorities, but to a lesser extent. By contrast, unitary and metropolitan authorities are found more frequently in the group with the largest than with the smallest proportion in special schools.

Local authority type (based on type after 2009)	Number of times listed among 20 LAs with smallest proportion of children in special schools	Number of times listed among 20 LAs with largest proportion of children in special schools
London borough	16	7
County	22	4
Metropolitan	15	30
Unitary	27	39
Total	80	80

Table 2: comparison of LA types represented in the top and bottom of table 3

Table 3: Percentage⁴ of 0-19 year-olds who are placed in: (i) special schools of various types⁵

2007			2009			2011			2013		
	ENGLAND	0.75		ENGLAND	0.76		ENGLAND	0.78		ENGLAND	0.80
1	Newham	0.20	1	Newham	0.18	1	Newham	0.22	1	Newham	0.20
2	Rutland	0.29	2	Rutland	0.35	2	Rutland	0.27	2	Cornwall	0.39
3	Cornwall	0.42	3	Cornwall	0.40	3	Cornwall	0.38	3	York, City of	0.41
4	Cumbria	0.42	4	Cumbria	0.43	4	York, City of	0.39	4	Rutland	0.41
5	Barnsley	0.44	5	York, City of	0.44	5	Somerset	0.45	5	Somerset	0.45
6	Leeds	0.46	6	Nottinghamshire	0.47	6	Cumbria	0.46	6	Derbyshire	0.50
7	Nottingham	0.46	7	Derbyshire	0.48	7	Derbyshire	0.48	7	Nottingham	0.50
8	York, City of	0.47	8	Somerset	0.48	8	Havering	0.48	8	Cumbria	0.51
9	Somerset	0.47	9	Havering	0.48	9	Kensington/Chelsea	0.49	9	Havering	0.51
10	East Riding of Yorkshire	0.49	10	Nottingham	0.49	10	Barnet	0.50	10	East Riding of Yorkshire	0.53
11	Nottinghamshire	0.49	11	Leeds	0.51	11	Nottinghamshire	0.50	11	Blackburn/Darwen	0.53
12	Derbyshire	0.49	12	East Riding of Yorkshire	0.51	12	Nottingham	0.52	12	Leeds	0.53
13	Havering	0.50	13	Kensington/Chelsea	0.52	13	Bradford	0.52	13	North Yorkshire	0.54
14	Kensington/Chelsea	0.50	14	Sandwell	0.52	14	Leeds	0.53	14	Nottinghamshire	0.55
15	Herefordshire	0.51	15	Barnet	0.53	15	East Riding of Yorkshire	0.54	15	Barnet	0.55
16	Barnet	0.51	16	Wiltshire	0.53	16	Oxfordshire	0.54	16	Wakefield	0.56
17	Sandwell	0.53	17	Oxfordshire	0.53	17	Barnsley	0.54	17	Bradford	0.56
18	Oxfordshire	0.54	18	Bradford	0.54	18	North Yorkshire	0.54	18	Wiltshire	0.56
19	Bradford	0.54	19	Barnsley	0.54	19	Wiltshire	0.55	19	Hackney	0.57
20	Leicestershire	0.54	20	Herefordshire	0.55	20	Wakefield	0.55	20	Suffolk	0.58
21	Wakefield	0.54	21	North Yorkshire	0.56	21	Suffolk	0.56	21	Sandwell	0.59
22	North Yorkshire	0.55	22	Calderdale	0.57	22	Kirklees	0.57	22	Barking/Dagenham	0.59
23	North Somerset	0.55	23	Wakefield	0.57	23	Sandwell	0.58	23	Oxfordshire	0.59
24	Calderdale	0.56	24	Wokingham	0.58	24	Cambridgeshire	0.59	24	Kensington/Chelsea	0.59
25	Shropshire	0.56	25	North Somerset	0.58	25	Blackburn/Darwen	0.61	25	Kirklees	0.60
26	Wokingham	0.57	26	Suffolk	0.58	26	Windsor/Maidenhead	0.61	26	Hammersmith/Fulham	0.61
27	Norfolk	0.58	27	Barking and Dagenham	0.58	27	Warrington	0.61	27	Calderdale	0.61
28	Oldham	0.58	28	Cambridgeshire	0.58	28	Richmond-u-Thames	0.62	28	Richmond-u-Thames	0.62
29	Suffolk	0.58	29	Shropshire	0.58	29	Devon	0.62	29	Warrington	0.62
30	Windsor/Maidenhead	0.59	30	Windsor/Maidenhead	0.58	30	Calderdale	0.63	30	Greenwich	0.63
31	Kirklees	0.60	31	Luton	0.59	31	Southampton	0.63	31	Luton	0.63
32	Wiltshire	0.60	32	Devon	0.59	32	North Somerset	0.63	32	Enfield	0.64
33	Barking/Dagenham	0.60	33	Leicestershire	0.59	33	Greenwich	0.63	33	Westminster	0.65
34	Devon	0.60	34	Richmond-u-Thames	0.60	34	Cheshire E (after 2009)	0.64	34	Southampton	0.65
35	Hartlepool	0.61	35	Kirklees	0.61	35	Hackney	0.64	35	Devon	0.65
36	S Gloucestershire	0.62	36	Essex	0.62	36	Barking/Dagenham	0.64	36	North Somerset	0.66
37	Southampton	0.62	37	Southampton	0.62	37	Essex	0.64	37	Norfolk	0.66
38	Cambridgeshire	0.62	38	Tower Hamlets	0.64	38	Hartlepool	0.64	38	Cheshire E (after 2009)	0.66
39	Essex	0.62	39	Westminster	0.64	39	Luton	0.64	39	Haringey	0.66
40	Greenwich	0.62	40	Hackney	0.64	40	S Gloucestershire	0.64	40	Cambridgeshire	0.67
41	Richmond-u-Thames	0.64	41	Norfolk	0.64	41	Wokingham	0.65	41	Essex	0.68
42	Bury	0.64	42	West Berkshire	0.64	42	Herefordshire	0.65	42	South Gloucestershire	0.69
43	Tower Hamlets	0.64	43	Blackburn/Darwen	0.65	43	Bury	0.65	43	Barnsley	0.70
44	Bolton	0.65	44	Bolton	0.65	44	Leicestershire	0.65	44	Redbridge	0.70
45	Luton	0.65	45	Oldham	0.65	45	Norfolk	0.65	45	Herefordshire	0.71
46	Northamptonshire	0.65	46	South Gloucestershire	0.66	46	Enfield	0.66	46	Wokingham	0.71
47	Gloucestershire	0.65	47	Hartlepool	0.66	47	Hammersmith/Fulham	0.66	47	Bolton	0.71
48	Cheshire (until 2009)	0.66	48	Greenwich	0.66	48	Shropshire	0.66	48	Windsor/Maidenhead	0.71
49	Kingston Upon Hull	0.66	49	Gloucestershire	0.66	49	West Berkshire	0.66	49	Bedford (after 2009)	0.72
50	Poole	0.66	50	Warrington	0.66	50	Bolton	0.68	50	Shropshire	0.72
51	Westminster	0.66	51	Poole	0.66	51	Bedford (after 2009)	0.69	51	Northamptonshire	0.73
52	Bath/NE Somerset	0.66	52	Cheshire (until 2009)	0.66	52	Gloucestershire	0.70	52	Bury	0.73
53	Derby	0.67	53	Northamptonshire	0.66	53	Tameside	0.70	53	West Berkshire	0.73
54	Isle of Wight	0.68	54	Bury	0.67	54	Kingston-u-Thames	0.72	54	Sheffield	0.73
55	Harrow	0.68	55	Kingston Upon Hull	0.69	55	Northamptonshire	0.73	55	Doncaster	0.73
56	Hackney	0.69	56	Hammersmith/ Fulham	0.70	56	Sheffield	0.73	56	Gloucestershire	0.74
57	St. Helens	0.69	57	Stockport	0.70	57	Cheshire West and Chester (after 2009)	0.73	57	Hertfordshire	0.74
58	Bournemouth	0.70	58	Kingston-u-Thames	0.70	58	Doncaster	0.74	58	Leicestershire	0.74
59	Blackburn/Darwen	0.70	59	Enfield	0.71	59	Camden	0.74	59	Tower Hamlets	0.76
60	West Berkshire	0.70	60	Bath/NE Somerset	0.71	60	Redbridge	0.74	60	Bristol	0.76
61	NE Lincolnshire	0.71	61	Derby	0.73	61	Stockport	0.74	61	Camden	0.76
62	Walsall	0.71	62	St. Helens	0.74	62	Merton	0.74	62	Islington	0.76
63	Bristol	0.72	63	Doncaster	0.74	63	Westminster	0.75	63	Brighton and Hove	0.76
64	Stockport	0.72	64	Haringey	0.74	64	Tower Hamlets	0.75	64	Stockport	0.77
65	Kingston-u-Thames	0.73	65	Tameside	0.75	65	Haringey	0.76	65	Slough	0.77
66	Warrington	0.73	66	Walsall	0.75	66	St. Helens	0.76	66	C Bedfordshire (after 2009)	0.78
67	North Lincolnshire	0.73	67	Redbridge	0.75	67	Hertfordshire	0.77	67	Portsmouth	0.78
68	Lambeth	0.74	68	North Lincolnshire	0.76	68	Central Bedfordshire (after 2009)	0.77	68	Tameside	0.78
69	Sheffield	0.74	69	Camden	0.76	69	Poole	0.77	69	Kingston-u-Thames	0.80
70	Enfield	0.75	70	Sheffield	0.77	70	Bath and NE Somerset	0.78	70	Wigan	0.81

Type of local authority:

Metropolitan authority

London borough

Unitary authority

County authority

71	Tameside	0.75	71	Merton	0.77	71	Kingston Upon Hull	0.78	71	Dorset	0.81
72	Sefton	0.75	72	Isle of Wight	0.77	72	Oldham	0.79	72	Bromley	0.81
73	Redbridge	0.75	73	Bromley	0.78	73	Islington	0.80	73	Bournemouth	0.81
74	Camden	0.76	74	Harrow	0.79	74	Bristol	0.81	74	Oldham	0.81
75	Hammersmith/ Fulham	0.77	75	NE Lincolnshire	0.79	75	Rochdale	0.81	75	St. Helens	0.82
76	Warwickshire	0.78	76	Islington	0.80	76	Sefton	0.81	76	Rochdale	0.82
77	Bromley	0.78	77	Bedfordshire (until '09)	0.80	77	Isle of Wight	0.82	77	Manchester	0.82
78	Northumberland	0.78	78	Dorset	0.80	78	Wigan	0.82	78	Cheshire West and Chester (after 2009)	0.82
79	Islington	0.78	79	Bournemouth	0.81	79	Dorset	0.82	79	North Lincolnshire	0.82
80	Kent	0.78	80	Rochdale	0.81	80	Walsall	0.82	80	Bath/NE Somerset	0.82
81	Doncaster	0.79	81	Sefton	0.81	81	Newcastle upon Tyne	0.83	81	Wandsworth	0.83
82	Thurrock	0.80	82	Northumberland	0.82	82	Hounslow	0.83	82	Isle of Wight	0.83
83	Haringey	0.80	83	Worcestershire	0.82	83	NE Lincolnshire	0.83	83	Harrow	0.83
84	Liverpool	0.81	84	Lambeth	0.83	84	Brighton and Hove	0.84	84	Kingston Upon Hull	0.83
85	Merton	0.81	85	Hertfordshire	0.83	85	Portsmouth	0.84	85	Newcastle upon Tyne	0.84
86	Worcestershire	0.81	86	Hampshire	0.83	86	North Lincolnshire	0.85	86	Southwark	0.84
87	Dorset	0.82	87	Kent	0.83	87	Bournemouth	0.85	87	Hartlepool	0.85
88	Swindon	0.82	88	Southwark	0.84	88	Thurrock	0.85	88	Ealing	0.86
89	Southwark	0.83	89	Thurrock	0.84	89	Harrow	0.86	89	Hampshire	0.86
90	Hertfordshire	0.83	90	West Sussex	0.84	90	Derby	0.86	90	Merton	0.86
91	Hampshire	0.83	91	Reading	0.85	91	Worcestershire	0.87	91	NE Lincolnshire	0.87
92	Medway	0.84	92	Surrey	0.85	92	Hampshire	0.87	92	Lambeth	0.87
93	Newcastle upon Tyne	0.84	93	Wigan	0.86	93	Surrey	0.87	93	Lewisham	0.88
94	Bedfordshire (until '09)	0.84	94	Bristol	0.86	94	Hillingdon	0.88	94	Surrey	0.88
95	Rochdale	0.84	95	Hounslow	0.87	95	Darlington	0.88	95	Swindon	0.88
96	Surrey	0.85	96	Newcastle upon Tyne	0.87	96	Kent	0.88	96	Hounslow	0.88
97	Darlington	0.85	97	Hillingdon	0.87	97	Slough	0.88	97	Poole	0.88
98	Plymouth	0.85	98	East Sussex	0.88	98	Southwark	0.89	98	Sefton	0.88
99	Peterborough	0.86	99	Ealing	0.88	99	Bromley	0.89	99	Waltham Forest	0.89
100	Redcar and Cleveland	0.87	100	Darlington	0.88	100	Northumberland	0.89	100	Medway	0.89
101	Bracknell Forest	0.87	101	Wandsworth	0.88	101	Lewisham	0.90	101	Thurrock	0.89
102	Hillingdon	0.87	102	Sunderland	0.88	102	Swindon	0.90	102	Leicester	0.90
103	Ealing	0.87	103	Manchester	0.89	103	East Sussex	0.90	103	Worcestershire	0.90
104	Lincolnshire	0.88	104	Bracknell Forest	0.89	104	Liverpool	0.91	104	Walsall	0.90
105	Leicester	0.88	105	Liverpool	0.89	105	Trafford	0.91	105	Brent	0.90
106	West Sussex	0.88	106	Gateshead	0.90	106	Plymouth	0.91	106	Darlington	0.90
107	Reading	0.88	107	Lincolnshire	0.90	107	West Sussex	0.91	107	Reading	0.91
108	North Tyneside	0.88	108	Warwickshire	0.90	108	Bracknell Forest	0.91	108	Rotherham	0.91
109	Solihull	0.88	109	Rotherham	0.90	109	Rotherham	0.92	109	East Sussex	0.92
110	Brent	0.89	110	Plymouth	0.91	110	Manchester	0.92	110	Derby	0.92
111	Portsmouth	0.89	111	Swindon	0.91	111	Wandsworth	0.92	111	Hillingdon	0.92
112	East Sussex	0.89	112	Sutton	0.92	112	Ealing	0.93	112	Plymouth	0.92
113	Sutton	0.90	113	Medway	0.92	113	Halton	0.93	113	Northumberland	0.93
114	Lancashire	0.91	114	Staffordshire	0.92	114	Sunderland	0.94	114	Sutton	0.93
115	Manchester	0.91	115	Buckinghamshire	0.92	115	Leicester	0.94	115	Kent	0.94
116	Sunderland	0.91	116	Solihull	0.92	116	Sutton	0.94	116	West Sussex	0.95
117	Wigan	0.92	117	North Tyneside	0.92	117	North Tyneside	0.95	117	Halton	0.95
118	Hounslow	0.92	118	Portsmouth	0.92	118	Warwickshire	0.95	118	Bexley	0.95
119	Dudley	0.92	119	Leicester	0.92	119	Waltham Forest	0.95	119	Trafford	0.98
120	Rotherham	0.94	120	Slough	0.92	120	Lambeth	0.95	120	Liverpool	0.98
121	Buckinghamshire	0.94	121	Peterborough	0.93	121	Blackpool	0.95	121	Lancashire	0.98
122	Staffordshire	0.95	122	Waltham Forest	0.94	122	Lancashire	0.96	122	Dudley	0.99
123	Slough	0.96	123	Lancashire	0.95	123	Reading	0.97	123	Blackpool	0.99
124	Telford and Wrekin	0.96	124	Lewisham	0.95	124	Gateshead	0.97	124	Sunderland	1.00
125	Waltham Forest	0.96	125	Dudley	0.95	125	Staffordshire	0.97	125	Gateshead	1.01
126	Wandsworth	0.96	126	Brighton and Hove	0.96	126	Medway	0.99	126	Birmingham	1.01
127	Gateshead	0.97	127	Trafford	0.96	127	Buckinghamshire	1.01	127	Milton Keynes	1.01
128	Croydon	0.97	128	Blackpool	0.97	128	Lincolnshire	1.01	128	Bracknell Forest	1.02
129	Blackpool	0.98	129	Halton	0.98	129	Dudley	1.01	129	Croydon	1.02
130	Bexley	0.98	130	Redcar and Cleveland	0.98	130	Bexley	1.02	130	North Tyneside	1.02
131	Trafford	0.99	131	Brent	0.98	131	Milton Keynes	1.02	131	Warwickshire	1.02
132	Birmingham	1.02	132	Milton Keynes	1.00	132	Redcar and Cleveland	1.03	132	Coventry	1.03
133	Southend-on-Sea	1.03	133	Croydon	1.01	133	Solihull	1.05	133	Buckinghamshire	1.03
134	Milton Keynes	1.04	134	Bexley	1.02	134	Croydon	1.05	134	Lincolnshire	1.04
135	Salford	1.05	135	Coventry	1.04	135	Brent	1.05	135	Salford	1.04
136	Durham	1.06	136	Durham	1.06	136	Stockton-on-Tees	1.06	136	Staffordshire	1.05
137	Middlesbrough	1.06	137	Wolverhampton	1.07	137	Southend-on-Sea	1.06	137	Southend-on-Sea	1.07
138	Wolverhampton	1.07	138	Middlesbrough	1.09	138	Peterborough	1.06	138	Stoke-on-Trent	1.10
139	Stockton-on-Tees	1.08	139	Telford and Wrekin	1.09	139	Durham	1.07	139	Stockton-on-Tees	1.12
140	Coventry	1.09	140	Stockton-on-Tees	1.10	140	Coventry	1.09	140	Solihull	1.12
141	Lewisham	1.09	141	Torbay	1.11	141	Middlesbrough	1.12	141	Durham	1.13
142	Torbay	1.12	142	Birmingham	1.12	142	Birmingham	1.12	142	Redcar and Cleveland	1.13
143	Halton	1.13	143	Southend-on-Sea	1.13	143	Wolverhampton	1.12	143	Peterborough	1.14
144	Brighton and Hove	1.14	144	Salford	1.13	144	Stoke-on-Trent	1.13	144	Wolverhampton	1.15
145	Stoke-on-Trent	1.17	145	Stoke-on-Trent	1.18	145	Telford and Wrekin	1.13	145	Telford and Wrekin	1.18
146	Knowsley	1.21	146	South Tyneside	1.19	146	Knowsley	1.15	146	South Tyneside	1.19
147	South Tyneside	1.28	147	Knowsley	1.19	147	Salford	1.17	147	Knowsley	1.22
148	Wirral	1.35	148	Wirral	1.37	148	Torbay	1.20	148	Middlesbrough	1.23
						149	South Tyneside	1.21	149	Wirral	1.27
						150	Wirral	1.27	150	Torbay	1.40

4 Rank order based on values before rounding to 2 decimal points

5 The City of London and the Isles of Scilly were excluded from this analysis, due to their small population size.

Table 4: Changes in percentage⁶ of pupils sent to special schools⁷

	i: percentage of pupils in special schools of various types, out of total 0-19 population					Total % change	change in percentage of pupils in special schools of various types, out of total 0-19 population					
	2007	2009	2011	2013	2007-13		2007-9		2009-11		2011-13	
	ENGLAND	0.75	0.76	0.78	0.80	0.04 ⁸	ENGLAND	0.01	ENGLAND	0.02	ENGLAND	0.01
1	Brighton and Hove	1.14	0.96	0.84	0.76	-0.38	Brighton and Hove	-0.19	Brighton and Hove	-0.12	Brent	-0.16
2	Lewisham	1.09	0.95	0.90	0.88	-0.21	Halton	-0.15	Wirral	-0.10	Salford	-0.12
3	Slough	0.96	0.92	0.88	0.77	-0.18	Lewisham	-0.13	Portsmouth	-0.08	Birmingham	-0.11
4	Halton	1.13	0.98	0.93	0.95	-0.18	South Tyneside	-0.09	Rutland	-0.08	Slough	-0.11
5	Blackburn with Darwen	0.70	0.65	0.61	0.53	-0.17	Wandsworth	-0.08	Southend-on-Sea	-0.07	Westminster	-0.10
6	Hammersmith/Fulham	0.77	0.70	0.66	0.61	-0.16	Gateshead	-0.07	Hertfordshire	-0.06	Manchester	-0.10
7	Haringey	0.80	0.74	0.76	0.66	-0.14	Wiltshire	-0.07	Lewisham	-0.06	Medway	-0.10
8	Wandsworth	0.96	0.88	0.92	0.83	-0.14	Hammersmith and Fulham	-0.07	Bristol	-0.06	Wandsworth	-0.09
9	Hackney	0.69	0.64	0.64	0.57	-0.12	Warrington	-0.07	Trafford	-0.05	Haringey	-0.09
10	Wigan	0.92	0.86	0.82	0.81	-0.11	Wigan	-0.06	Stoke-on-Trent	-0.05	Lambeth	-0.08
11	Portsmouth	0.89	0.92	0.84	0.78	-0.11	Luton	-0.06	Enfield	-0.05	Brighton and Hove	-0.08
12	Warrington	0.73	0.66	0.61	0.62	-0.11	Haringey	-0.06	Warrington	-0.05	Bromley	-0.08
13	Enfield	0.75	0.71	0.66	0.64	-0.11	West Berkshire	-0.06	York, City of	-0.05	Blackburn/Darwen	-0.07
14	Manchester	0.91	0.89	0.92	0.82	-0.09	Blackburn with Darwen	-0.06	Kirklees	-0.05	Ealing	-0.07
15	South Tyneside	1.28	1.19	1.21	1.19	-0.09	Hounslow	-0.06	Halton	-0.05	Portsmouth	-0.07
16	Hertfordshire	0.83	0.83	0.77	0.74	-0.09	Doncaster	-0.05	Slough	-0.05	Hackney	-0.07
17	Waltham Forest	0.96	0.94	0.95	0.89	-0.07	Hackney	-0.05	Knowsley	-0.04	Bexley	-0.06
18	Stoke-on-Trent	1.17	1.18	1.13	1.10	-0.07	Milton Keynes	-0.04	Sheffield	-0.04	Reading	-0.06
19	Wirral	1.35	1.37	1.27	1.27	-0.07	Coventry	-0.04	Tameside	-0.04	Coventry	-0.06
20	Coventry	1.09	1.04	1.09	1.03	-0.06	Bedfordshire (until 2009)	-0.04	Blackburn/Darwen	-0.04	Waltham Forest	-0.06
21	Doncaster	0.79	0.74	0.74	0.73	-0.06	Cambridgeshire	-0.04	Hammersmith/Fulham	-0.04	Hammersmith/ Fulham	-0.05
22	York, City of	0.47	0.44	0.39	0.41	-0.06	Merton	-0.04	Newcastle-u-Tyne	-0.04	Bristol	-0.05
23	Redbridge	0.75	0.75	0.74	0.70	-0.05	Enfield	-0.04	Hounslow	-0.04	Barking/Dagenham	-0.05
24	Hounslow	0.92	0.87	0.83	0.88	-0.04	Rotherham	-0.04	Somerset	-0.04	Leicester	-0.05
25	Wiltshire	0.60	0.53	0.55	0.56	-0.04	West Sussex	-0.04	Wigan	-0.04	Southwark	-0.04
26	Milton Keynes	1.04	1.00	1.02	1.01	-0.03	Rochdale	-0.03	Stockton-on-Tees	-0.03	Islington	-0.04
27	Bexley	0.98	1.02	1.02	0.95	-0.03	Slough	-0.03	Merton	-0.03	Redbridge	-0.04
28	Somerset	0.47	0.48	0.45	0.45	-0.03	Richmond upon Thames	-0.03	Camden	-0.03	Bournemouth	-0.03
29	Rotherham	0.94	0.90	0.92	0.91	-0.03	Reading	-0.03	Kensington/ Chelsea	-0.03	Croydon	-0.03
30	Rochdale	0.84	0.81	0.81	0.82	-0.03	Sunderland	-0.03	Barnet	-0.03	Hertfordshire	-0.03
31	Cornwall	0.42	0.40	0.38	0.39	-0.02	Staffordshire	-0.03	Greenwich	-0.02	Stoke-on-Trent	-0.03
32	Islington	0.78	0.80	0.80	0.76	-0.02	Manchester	-0.03	Bury	-0.02	North Lincolnshire	-0.02
33	Luton	0.65	0.59	0.64	0.63	-0.02	York, City of	-0.03	North Yorkshire	-0.02	Harrow	-0.02
34	Richmond upon Thames	0.64	0.60	0.62	0.62	-0.02	Stockport	-0.03	Cornwall	-0.02	Swindon	-0.02
35	Ealing	0.87	0.88	0.93	0.86	-0.02	Trafford	-0.02	Wakefield	-0.02	Newham	-0.02
36	Dorset	0.82	0.80	0.82	0.81	-0.01	Kingston upon Thames	-0.02	Suffolk	-0.02	Lewisham	-0.02
37	Birmingham	1.02	1.12	1.12	1.01	-0.01	Barking and Dagenham	-0.02	Hartlepool	-0.01	Nottinghamham	-0.02
38	Barking and Dagenham	0.60	0.58	0.64	0.59	-0.01	Waltham Forest	-0.02	Bradford	-0.01	Enfield	-0.02
39	Trafford	0.99	0.96	0.91	0.98	-0.01	Buckinghamshire	-0.02	Redbridge	-0.01	South Tyneside	-0.01
40	North Yorkshire	0.55	0.56	0.54	0.54	-0.01	Knowsley	-0.02	Blackpool	-0.01	Wigan	-0.01
41	Salford	1.05	1.13	1.17	1.04	-0.01	Derbyshire	-0.02	S. Gloucestershire	-0.01	Calderdale	-0.01
42	Westminster	0.66	0.64	0.75	0.65	-0.01	Westminster	-0.02	Swindon	-0.01	Luton	-0.01
43	Suffolk	0.58	0.58	0.56	0.58	-0.01	Dorset	-0.02	Darlington	-0.01	Dudley	-0.01
44	Sheffield	0.74	0.77	0.73	0.73	-0.01	East Sussex	-0.02	Hackney	-0.01	Dorset	-0.01
45	Kirklees	0.60	0.61	0.57	0.60	0.00	Havering	-0.02	Bexley	0.00	Milton Keynes	-0.01
46	Derbyshire	0.49	0.48	0.48	0.50	0.00	Devon	-0.02	Barnsley	0.00	Hampshire	-0.01
47	Newham	0.20	0.18	0.22	0.20	0.00	Newham	-0.02	Doncaster	0.00	Greenwich	-0.01
48	Camden	0.76	0.76	0.74	0.76	0.00	Cornwall	-0.02	Havering	0.00	Sutton	-0.01
49	Greenwich	0.62	0.66	0.63	0.63	0.00	Sandwell	-0.01	Rochdale	0.00	East Riding of Yorkshire	-0.01
50	Newcastle upon Tyne	0.84	0.87	0.83	0.84	0.01	Nottinghamshire	-0.01	Hillingdon	0.00	Rotherham	-0.01
51	Knowsley	1.21	1.19	1.15	1.22	0.01	Blackpool	-0.01	Plymouth	0.00	Doncaster	0.00
52	Brent	0.89	0.98	1.05	0.90	0.01	Windsor and Maidenhead	-0.01	Islington	0.00	Richmond-u-Thames	0.00
53	Havering	0.50	0.48	0.48	0.51	0.01	Tower Hamlets	-0.01	Sefton	0.00	Northamptonshire	0.00
54	Wakefield	0.54	0.57	0.55	0.56	0.01	Torbay	-0.01	Derbyshire	0.00	North Yorkshire	0.00
55	Blackpool	0.98	0.97	0.95	0.99	0.02	Essex	-0.01	Birmingham	0.01	Leeds	0.00
56	Bradford	0.54	0.54	0.52	0.56	0.02	Oxfordshire	-0.01	Southampton	0.01	Somerset	0.00
57	Southwark	0.83	0.84	0.89	0.84	0.02	Tameside	0.00	Cambridgeshire	0.01	C. Bedfordshire (after '09)	0.00
58	Leicester	0.88	0.92	0.94	0.90	0.02	Suffolk	0.00	Oxfordshire	0.01	Wirral	0.00
59	East Sussex	0.89	0.88	0.90	0.92	0.02	Redbridge	0.00	Lancashire	0.01	Wakefield	0.00
60	West Berkshire	0.70	0.64	0.66	0.73	0.02	Bradford	0.00	Waltham Forest	0.01	Tower Hamlets	0.00
61	Reading	0.88	0.85	0.97	0.91	0.03	Bromley	0.00	Durham	0.01	Surrey	0.00
62	Hampshire	0.83	0.83	0.87	0.86	0.03	Bolton	0.00	Thurrock	0.01	Sheffield	0.01
63	Bromley	0.78	0.78	0.89	0.81	0.03	Wokingham	0.00	Norfolk	0.01	Norfolk	0.01
64	Surrey	0.85	0.85	0.87	0.88	0.03	Hampshire	0.00	Liverpool	0.01	Sandwell	0.01
65	Southampton	0.62	0.62	0.63	0.65	0.03	Wolverhampton	0.00	Haringey	0.01	Southend-on-Sea	0.01
66	Bristol	0.72	0.86	0.81	0.76	0.03	Hertfordshire	0.00	West Berkshire	0.01	Isle of Wight	0.01
67	Tameside	0.75	0.75	0.70	0.78	0.03	Worcestershire	0.00	Richmond-u- Thames	0.02	Wiltshire	0.01
68	Sutton	0.90	0.92	0.94	0.93	0.04	Ealing	0.00	Rotherham	0.02	Rochdale	0.01
69	Stockton-on-Tees	1.08	1.10	1.06	1.12	0.04	Southampton	0.00	Dorset	0.02	Warrington	0.01
70	Southend-on-Sea	1.03	1.13	1.06	1.07	0.04	Hillingdon	0.00	South Tyneside	0.02	Cornwall	0.01
71	Barnet	0.51	0.53	0.50	0.55	0.04	Calderdale	0.01	Leicester	0.02	Plymouth	0.01
72	Gateshead	0.97	0.90	0.97	1.01	0.04	Surrey	0.01	Surrey	0.02	Suffolk	0.01
73	Nottingham	0.46	0.49	0.52	0.50	0.04	Poole	0.01	St. Helens	0.02	Derbyshire	0.01
74	East Riding of Yorkshire	0.49	0.51	0.54	0.53	0.04	Gloucestershire	0.01	Kingston-u-Thames	0.02	East Sussex	0.02
75	Stockport	0.72	0.70	0.74	0.77	0.04	Cheshire (until 2009)	0.01	E Riding of Yorkshire	0.02	Newcastle upon Tyne	0.02
76	Cambridgeshire	0.62	0.58	0.59	0.67	0.05	Camden	0.01	Essex	0.02	York, City of	0.02
77	Devon	0.60	0.59	0.62	0.65	0.05	Stoke-on-Trent	0.01	Wiltshire	0.02	Halton	0.02



Changes between 2007 and 2013

Whilst the overall percentage of pupils placed in special schools has shown only a slight increase over the years studied (0.04 %)⁹, the picture varies considerably by local authority. 35 of the LAs showed an overall decrease over the period, 19 showed no, or very little change (between a fall of 0.01 % to a rise of 0.01 %), and 93 showed an increase.¹⁰

Table 4 shows changes in percentage of pupils sent to special schools and ranks local authorities, year on year and overall, with those making the biggest change towards inclusion at the top.

LAs showing significant decreases

There are 15 LAs that appear on more than one occasion among the 20 LAs with the most significant decreases in the proportion of children being sent to special schools (top of table 4). These are the London boroughs of **Lewisham, Wandsworth, Hammersmith and Fulham, Haringey, Hackney, Enfield and Waltham Forest**; the unitary authorities of **Brighton and Hove, Halton, Warrington, Blackburn with Darwen, Portsmouth and Slough**; the metropolitan authorities of **Wigan and Coventry**; and **Hertfordshire County Council**.

Two authorities **Blackburn with Darwen** and **Brighton and Hove** showed three annual decreases in the table. **Brighton and Hove** showed sustained decreases over the years looked at, reducing segregation by 0.19 % between 2007-09, 0.12 % between 2009-11 and 0.08 % between 2011-13. Brighton and Hove was among the five LAs with the largest proportion of pupils in special schools in 2007, but disappeared from the 20 most segregating

authorities after 2007. This indicates a move away from segregating pupils with statements in this LA. In 2007 1 in every 88 children living in Brighton and Hove LA were placed in special schools; this was reduced to 1 in every 104 in 2009, 1 in every 119 in 2011 and 1 in every 132 in 2013. **Blackburn with Darwen** also showed sustained decreases, reducing the proportion of pupils sent to special schools by 0.06 % between 2007-09, 0.04 % between 2009-11 and by 0.07 % between 2011-13. It appeared among the 20 least segregating LAs in 2013, when 0.53 % of its pupils were in special schools. In 2007 1 in every 143 young people attended special school, reducing to 1 in every 154 in 2009, 1 in every 164 in 2011 and 1 in every 189 in 2013.

Of the 18 LAs that appear more than once in the top of table 4, four also appear in the list of LAs with the largest proportion of pupils in special schools – **Brighton and Hove, Halton, Lewisham and Coventry**. 11 additional local authorities appear both in the bottom 20 of table 4 (although only once) and in the bottom 20 of table 3 – LAs with the largest proportion of pupils in special schools. These are **Wirral, Stoke-on-Trent, Trafford, Milton Keynes, Bexley, South Tyneside, Knowsley, Brent, Southend-on-sea, Salford and Birmingham**.

Brighton and Hove was among the five LAs with the largest proportion of pupils in special schools in 2007 (bottom of table 3), but reduced this proportion by 0.19 % between 2007 and 2009 (this is described more fully above). **Stoke-on-Trent** was also among these five LAs in 2007 and 2009, but reduced the proportion of pupils in special schools in the following years by a total of 0.07 % . **Wirral, South Tyneside and Knowsley** appear in the list of five most segregating LAs throughout the years explored in this study. **Wirral**, despite being the LA with the largest proportion of pupils in special schools in 2007, 2009 and 2011 reduced this proportion from 1.35 % to 1.27 % , a drop of 0.07 % . Thus, whilst 1 in 73 of its pupils were in special schools

9 Based on values before rounding to two decimal places

10 The City of London and the Isles of Scilly were excluded from this analysis, due to their small population size. Also omitted from the calculation of changes between 2007 to 2013 are the LAs which changed boundaries during this period – Bedfordshire which became i/Central Bedfordshire and ii/Bedford; and Cheshire which became i/Cheshire East and ii/ Cheshire West and Chester.

78	Darlington	0.85	0.88	0.88	0.90	0.05	Southwark	0.01	North Tyneside	0.02	Darlington	0.02
79	Croydon	0.97	1.01	1.05	1.02	0.05	Durham	0.01	Windsor/ Maidenhead	0.02	Southampton	0.02
80	Calderdale	0.56	0.57	0.63	0.61	0.05	Somerset	0.01	East Sussex	0.02	Lancashire	0.02
81	Merton	0.81	0.77	0.74	0.86	0.05	North Yorkshire	0.01	Milton Keynes	0.03	Camden	0.02
82	Hillingdon	0.87	0.87	0.88	0.92	0.05	Stockton-on-Tees	0.01	Sutton	0.03	Wolverhampton	0.02
83	Sandwell	0.53	0.52	0.58	0.59	0.05	Islington	0.01	Bracknell Forest	0.03	Oldham	0.03
84	Swindon	0.82	0.91	0.90	0.88	0.05	Barnet	0.01	Cumbria	0.03	Cheshire E (after 2009)	0.03
85	Medway	0.84	0.92	0.99	0.89	0.06	Kensington and Chelsea	0.01	Leeds	0.03	Worcestershire	0.03
86	Oxfordshire	0.54	0.53	0.54	0.59	0.06	Cumbria	0.02	Bolton	0.03	North Somerset	0.03
87	Essex	0.62	0.62	0.64	0.68	0.06	Northamptonshire	0.02	Nottinghamshire	0.03	Buckinghamshire	0.03
88	Bolton	0.65	0.65	0.68	0.71	0.06	Sutton	0.02	Nottingham	0.03	Bedford (after 2009)	0.03
89	Nottinghamshire	0.49	0.47	0.50	0.55	0.06	Kirklees	0.02	Manchester	0.03	Stockport	0.03
90	West Sussex	0.88	0.84	0.91	0.95	0.07	Shropshire	0.02	Salford	0.03	Devon	0.03
91	South Gloucestershire	0.62	0.66	0.64	0.69	0.07	Lincolnshire	0.02	Middlesbrough	0.03	Kirklees	0.03
92	Plymouth	0.85	0.91	0.91	0.92	0.07	Bracknell Forest	0.02	Devon	0.03	Havering	0.03
93	Dudley	0.92	0.95	1.01	0.99	0.07	Wirral	0.02	NE Lincolnshire	0.03	Northumberland	0.03
94	Lancashire	0.91	0.95	0.96	0.98	0.07	North Lincolnshire	0.03	Wandsworth	0.04	Gloucestershire	0.03
95	Kingston upon Thames	0.73	0.70	0.72	0.80	0.08	Nottingham	0.03	Stockport	0.04	Bradford	0.03
96	Leeds	0.46	0.51	0.53	0.53	0.08	Bury	0.03	Hampshire	0.04	Bolton	0.03
97	Northamptonshire	0.65	0.66	0.73	0.73	0.08	Newcastle upon Tyne	0.03	Bournemouth	0.04	West Sussex	0.04
98	Durham	1.06	1.06	1.07	1.13	0.08	East Riding of Yorkshire	0.03	Newham	0.04	Gateshead	0.04
99	Norfolk	0.58	0.64	0.65	0.66	0.08	North Somerset	0.03	Croydon	0.04	Lincolnshire	0.04
100	Gloucestershire	0.65	0.66	0.70	0.74	0.08	Middlesbrough	0.03	Gloucestershire	0.04	NE Lincolnshire	0.04
101	Worcestershire	0.81	0.82	0.87	0.90	0.08	Wakefield	0.03	Isle of Wight	0.04	Blackpool	0.04
102	Wolverhampton	1.07	1.07	1.12	1.15	0.08	Dudley	0.03	Kent	0.04	S. Gloucestershire	0.04
103	Bury	0.64	0.67	0.65	0.73	0.08	Sheffield	0.03	Telford & Wrekin	0.04	Telford and Wrekin	0.04
104	Sunderland	0.91	0.88	0.94	1.00	0.09	Darlington	0.03	Coventry	0.05	Essex	0.04
105	Cumbria	0.42	0.43	0.46	0.51	0.09	Greenwich	0.03	Warwickshire	0.05	Thurrock	0.04
106	North Lincolnshire	0.73	0.76	0.85	0.82	0.09	Kingston Upon Hull	0.04	Southwark	0.05	Nottinghamshire	0.05
107	Kensington and Chelsea	0.50	0.52	0.49	0.59	0.09	Northumberland	0.04	Ealing	0.05	Cumbria	0.05
108	Buckinghamshire	0.94	0.92	1.01	1.03	0.09	Portsmouth	0.04	North Somerset	0.05	Hillingdon	0.05
109	Thurrock	0.80	0.84	0.85	0.89	0.09	South Gloucestershire	0.04	Worcestershire	0.05	Bath/NE Somerset	0.05
110	Staffordshire	0.95	0.92	0.97	1.05	0.10	Croydon	0.04	Dudley	0.05	Barnet	0.05
111	North Somerset	0.55	0.58	0.63	0.66	0.11	Solihull	0.04	Redcar & Cleveland	0.05	Hounslow	0.05
112	Tower Hamlets	0.64	0.64	0.75	0.76	0.11	Walsall	0.04	Staffordshire	0.05	Stockton-on-Tees	0.06
114	Bournemouth	0.70	0.81	0.85	0.81	0.12	Bexley	0.04	Sunderland	0.05	Oxfordshire	0.06
114	Windsor/Maidenhead	0.59	0.58	0.61	0.71	0.12	North Tyneside	0.04	Barking/ Dagenham	0.06	Derby	0.06
115	Rutland	0.29	0.35	0.27	0.41	0.12	Thurrock	0.04	Wolverhampton	0.06	Kingston Upon Hull	0.06
116	St. Helens	0.69	0.74	0.76	0.82	0.12	Herefordshire	0.04	Calderdale	0.06	Herefordshire	0.06
117	Lambeth	0.74	0.83	0.95	0.87	0.13	Lancashire	0.04	Luton	0.06	St. Helens	0.06
118	Wokingham	0.57	0.58	0.65	0.71	0.13	St. Helens	0.04	Sandwell	0.06	Durham	0.06
119	Sefton	0.75	0.81	0.81	0.88	0.13	Bath/North East Somerset	0.04	Northamptonshire	0.06	Sunderland	0.06
120	North Tyneside	0.88	0.92	0.95	1.02	0.14	Leicestershire	0.05	Leicestershire	0.06	Wokingham	0.06
121	Northumberland	0.78	0.82	0.89	0.93	0.14	Leicester	0.05	West Sussex	0.07	Shropshire	0.07
122	Bracknell Forest	0.87	0.89	0.91	1.02	0.15	Leeds	0.05	Bath/NE Somerset	0.07	Kent	0.07
123	Isle of Wight	0.68	0.77	0.82	0.83	0.15	Kent	0.05	Harrow	0.07	Trafford	0.07
124	Harrow	0.68	0.79	0.86	0.83	0.15	Hartlepool	0.05	Wokingham	0.07	West Berkshire	0.07
125	Shropshire	0.56	0.58	0.66	0.72	0.16	Plymouth	0.05	Medway	0.07	Liverpool	0.07
126	Kent	0.78	0.83	0.88	0.94	0.16	Rutland	0.06	Brent	0.07	Sefton	0.07
127	Bath and NE Somerset	0.66	0.71	0.78	0.82	0.16	Sefton	0.06	Gateshead	0.08	Knowsley	0.07
128	North East Lincolnshire	0.71	0.79	0.83	0.87	0.16	Norfolk	0.06	Walsall	0.08	Walsall	0.07
129	Lincolnshire	0.88	0.90	1.01	1.04	0.17	Derby	0.06	Shropshire	0.08	North Tyneside	0.07
130	Middlesbrough	1.06	1.09	1.12	1.23	0.17	Peterborough	0.07	Northumberland	0.08	Solihull	0.08
131	Liverpool	0.81	0.89	0.91	0.98	0.17	Oldham	0.07	Kingston-u-Hull	0.08	Warwickshire	0.08
132	Kingston Upon Hull	0.66	0.69	0.78	0.83	0.18	Salford	0.08	Buckinghamshire	0.09	Staffordshire	0.08
133	Walsall	0.71	0.75	0.82	0.90	0.19	Medway	0.08	North Lincolnshire	0.09	Kingston-u-Thames	0.08
134	Herefordshire	0.51	0.55	0.65	0.71	0.20	North East Lincolnshire	0.09	Torbay	0.09	Peterborough	0.08
135	Leicestershire	0.54	0.59	0.65	0.74	0.20	Swindon	0.09	Herefordshire	0.10	Tameside	0.08
136	Telford and Wrekin	0.96	1.09	1.13	1.18	0.22	Liverpool	0.09	Bromley	0.11	Bury	0.08
137	Poole	0.66	0.66	0.77	0.88	0.22	Lambeth	0.09	Westminster	0.11	Cambridgeshire	0.08
138	Oldham	0.58	0.65	0.79	0.81	0.23	Brent	0.09	Lincolnshire	0.11	Cheshire West & Chester (after 2009)	0.09
139	Solihull	0.88	0.92	1.05	1.12	0.24	Birmingham	0.10	Poole	0.11	Leicestershire	0.09
140	Hartlepool	0.61	0.66	0.64	0.85	0.24	Isle of Wight	0.10	Tower Hamlets	0.12	Bracknell Forest	0.10
141	Warwickshire	0.78	0.90	0.95	1.02	0.25	Southend-on-Sea	0.10	Reading	0.12	Redcar/Cleveland	0.10
142	Derby	0.67	0.73	0.86	0.92	0.25	Barnsley	0.10	Lambeth	0.12	Kensington/Chelsea	0.10
143	Barnsley	0.44	0.54	0.54	0.70	0.26	Harrow	0.11	Derby	0.13	Windsor/Maidenhead	0.10
144	Redcar and Cleveland	0.87	0.98	1.03	1.13	0.27	Bournemouth	0.11	Solihull	0.13	Poole	0.11
145	Torbay	1.12	1.11	1.20	1.40	0.28	Redcar and Cleveland	0.11	Peterborough	0.14	Middlesbrough	0.11
146	Peterborough	0.86	0.93	1.06	1.14	0.28	Warwickshire	0.12	Oldham	0.14	Merton	0.12
							Telford and Wrekin	0.13			Rutland	0.14
							Bristol	0.14			Barnsley	0.16
											Torbay	0.19
											Hartlepool	0.21

Bedford (after 2009)			0.69	0.72
Bedfordshire (until '09)	0.84	0.80		
C Bedfordshire (after '09)			0.77	0.78
Cheshire (until 2009)	0.66	0.66		
Cheshire East (after '09)			0.64	0.66
Cheshire West and Chester (after 2009)			0.73	0.82

Type of local authority:

Metropolitan authority London borough Unitary authority County authority

6 % change figures and rank order based on values before rounding to 2 decimal points

7 The City of London and the Isles of Scilly were excluded from this analysis, due to their small population size

8 % in 2007: 0.7525. % 2013: 0.7955. % change: 0.043, which is rounded down to 0.04

in 2009, this was reduced to 1 in 79 in 2011. **South Tyneside** reduced this percentage from 1.28 % to 1.19 % over the four years of the study, this drop being recorded between 2007 and 2009.

Halton was ranked 143rd in 2007, rising to 129th position in 2009, and disappearing from the list of 20 most segregating LAs in 2011 and 2013. **Lewisham**, although ranked 141st in 2007 was not among the 20 most segregating LAs in the following years examined. The proportion of its pupils in special schools reduced from 1.09 % in 2007 to 0.88 % in 2013, a drop of 0.21 %. (In 2007, 1 in 92 children living in Lewisham attended special schools; this was reduced to 1 in 114 in 2013.)

Other LAs which appear in both the bottom of table 3 and the top of table 4 are **Bexley** (among the 20 most segregating LAs for years 2007-11, reducing its proportion of pupils in special schools by 0.06 % between 2011-13), **Milton Keynes** (among the 20 most segregating LAs for years 2007-11, reducing the proportion of pupils in special schools

pupils in special schools in all four years, increasing in 2007-09 by 0.08 %, but reducing by 0.12 % between 2011-13. **Birmingham** appears in the bottom of table 3 for three years from 2007-11 increasing by 0.10 % in 2007-09, however, it reduced this percentage by 0.11 % between 2011-13. **Brent** appeared among the LAs with the largest proportion of pupils in special school in 2009, having increased this proportion from 0.89 % to 0.98 % between 2007-09. It then disappeared from the list of 20 most segregating LAs in 2013, having reduced its proportion of pupils in special schools by 0.16 % between 2011-13.

Six of the LAs that appear in the bottom of table 4 appear in the list of LAs with the *smallest* proportion of pupils in special schools (top of table 3). These are the unitary authorities of **Blackburn with Darwen**, **City of York**, **Rutland** and **Wiltshire**, the London Borough of **Hackney** and **Somerset** County Council. No metropolitan authorities appear both in the top of table 3 and the bottom of

“The change over time is due to our SEN Review where we sought to create real choice in the type of school children could access if they have SEN. Our emphasis was to strengthen the mainstream option by establishing a range of specialist units within mainstream schools; whilst at the same time increasing the confidence of all schools in providing an SEN place. This has resulted in an increasing number of parents and children choosing a non segregated school place. For those wanting a specialist school, this is still available.”

Gerald Meehan, Strategic Director of Children and Enterprise
Halton Borough Council

by 0.04 % between 2007-09) and **Trafford** (among the 20 most segregating LAs in 2007, reducing the proportion of pupils in special schools by 0.05 % between 2009-11).

Brent, **Southend-on-Sea**, **Salford** and **Birmingham** show interesting changes. They appear among the authorities with the largest proportion of students in special schools, as well as in *the top and bottom of table 4*— showing significant increases and decreases. **Southend-on-Sea** appears as one of the 20 LAs with the largest proportion of pupils in special schools over all four years, its proportion increases by 0.10 % in 2007-09, but decreases by 0.07 % in 2009-11. **Salford** also appears as one of the 20 LAs with the largest proportion of

table 4. The case of **Blackburn with Darwen** is described above. The **City of York** appears in the list of the 20 LAs with the smallest proportion of students in special schools in all years of this study, and reduced this proportion from 0.47 % in 2007 to 0.41 % in 2013.

Wiltshire appeared as a LA with a small proportion of pupils in special schools in 2009, having reduced this proportion by 0.07 % between 2007-09. It remained in the top of table 3 for 2009, 2011 and 2013.

Hackney appeared as one of the least segregating LAs in 2013, with 0.57 % of its pupils in special schools, reduced from 0.69 % in 2007.

Rutland County Council¹¹, the smallest local authority in this analysis, is interesting; it appears among the authorities with the smallest proportion of students in special schools, as well as in the top and bottom of table 4 – showing a significant increase in both 2007-09 and 2011-13, but also a significant decrease in 2009-11. It remains ranked as a top 5 LA with the smallest proportion of students in special schools, however, varies from 0.29% of its students in special schools in 2007 (the equivalent of 1 in 345 pupils) to 0.35% in 2009 (1 in 286) to 0.27% in 2011, to 0.41% in 2013 (1 in 244). The fluctuation may be due to its small size.

“Peterborough is a rapidly growing city. It has the second largest birth-rate in the country, a rapidly growing migrant population and a larger than average prevalence of SEN. Our special schools are rated good or outstanding by Ofsted and we are deliberately increasing their capacity, in an effort to reduce out-of-authority placements and keep children in their communities.”

Jonathan Lewis
Interim Head of Education
Peterborough City Council

Warwickshire; and the London borough of **Lambeth**.

One LA, **Peterborough**, showed three annual increases in the table, increasing from 0.86% in 2007, 0.93% in 2009, 1.06% in 2011 to 1.14% in 2013, a total increase of 0.28%. Peterborough was listed among the 20 LAs with the highest proportion of pupils in special schools in 2011 and 2013, indicating a move towards increased segregation of pupils with statements in this LA. In 2007 1 in every 116 children living in Peterborough were placed in special schools; this increased to 1 in every 108 in 2009, 1 in every 94 in 2011

and 1 in every 88 in 2013. 15 LAs appear both in the bottom of table 3 – those with the largest proportion of students in special schools – and among the LAs with the most significant increases (bottom of table 4). These are the unitary authorities of **Telford and Wrekin, Warwickshire, Redcar and Cleveland, Peterborough, Torbay, Middlesbrough, Southend-on-Sea** and **Bracknell Forest**; the metropolitan authorities of **Solihull, Birmingham** and **Salford**; the county authorities of **Lincolnshire, Buckinghamshire** and **Staffordshire**; and the London borough of **Brent**. Brent, Southend-on-Sea, Salford and Birmingham have been described previously as

LAs showing significant increases

There are 11 LAs that appear on more than one occasion among the 20 LAs with the most significant increases in the proportion of children being sent to special schools (see bottom of table 4).

These are: the unitary authorities of **Peterborough, Torbay, Redcar and Cleveland, Derby, Poole**, and **Rutland**; the metropolitan authorities of **Barnsley, Solihull** and **Oldham**, the county of

“It is important to us that Barnsley continues to have a relatively low number of special school placements. This has recently increased because of:

- growing parental demand (our special schools have been rated ‘outstanding’ by Ofsted);
- a strategic commitment to create more special school places within Barnsley, in order to reduce out-of-authority placements;
- the standards agenda, which can appear to be in conflict with inclusive education;
- the loss of key posts previously supporting inclusion in mainstream schools; in response, we have launched the Barnsley Challenge programme to challenge and support schools in developing more inclusive practice.”

Rachel Dickinson, Executive Director for Children Young People and Families
Barnsley Council

¹¹ Rutland had a population of approximately 8,800 children aged between 0-19 in 2013. It has 17 primary schools, 3 secondary schools and 1 special school. The next smallest authority is Hartlepool with approximately 22,600 children aged 0-19 in 2013.

they appear in the table of authorities with the largest proportion of students in special schools, as well as in the top and bottom of table 4 – showing significant increases and decreases.

Five of the LAs that appear in the bottom of table 4, those that show the most significant increase in proportion of pupils placed in special schools,

than decreases over this period. There are small differences between increases or decreases in special schools for county and metropolitan authorities. By contrast, London authorities represent a third of the LAs with largest overall special school decreases while having no authorities with the largest overall increases.

Local authority type (based on type after 2009)	Frequency in top 20 of table 4 (LAs with largest overall decrease in percentage of pupils in special schools, 2007-13)	Frequency in bottom 20 of table 4 (LAs with largest overall increase in percentage of pupils in special schools, 2007-13)
London borough	7	0
County	1	2
Metropolitan	5	5
Unitary	7	13
Total	20	20

Table 5: Comparison of LA types with largest overall increase and decrease in percentage of pupils in special schools between 2007-13

also appear in the list of LAs with the smallest proportion of pupils in special schools (top of table 3). These are the unitary authorities of **Herefordshire** and **Rutland**; the county council of **Leicestershire**, the metropolitan authority of **Barnsley**, and the London Borough of **Kensington and Chelsea**. **Rutland** has been described previously as it appears in the table of authorities with the largest proportion of students in special schools, as well as at the top and bottom of table 4 – showing significant increases *and* decreases.

When the number of LAs by type (representing either the highest overall increase or decrease in the top and bottom of table 4) are compared certain patterns emerge as shown in table 5. Unitary authorities show the largest differences with more showing special school increases

LAs showing significant decreases AND increases

In addition to the local authorities described in the section above (LAs which appear in either the top or the bottom of table 3) and appearing in both ends of table 4, the following LAs appear among the LAs with the largest increases of pupils in special schools, and among those with the largest decreases. Table 6 shows the pattern of increases and decreases. They are the London boroughs of **Lambeth**, **Westminster**, **Bromley**; the unitary authorities of **Bristol**, **Medway**, **Reading**; the metropolitan authorities of **Gateshead** and **Tameside**.

Local authority	2007-09	2009-11	2011-13
Lambeth	increase	increase	decrease
Medway	increase	Not in table	decrease
Westminster	Not in table	increase	decrease
Bromley			
Reading			
Bristol	increase	decrease	Not in table
Gateshead	decrease	increase	Not in table
Tameside	Not in table	decrease	increase

Table 6: LAs which show a top 20 increase AND a top 20 decrease in the years looked at in this study (“Not in table” indicates that the LA was not recorded among the 20 that increased or decreased most in that year.)



Summary and Recommendations

This report presents school placement trends (i.e. the proportion of children placed in special schools or other separate settings) for all local authorities in England for the years 2007 to 2013. CSIE has been monitoring special school placements since 1983.

Like previous issues in this series, this report reveals huge variation in the way local authorities respond to diversity; some rely more on ordinary local schools, while others regularly send high proportions of children to separate settings. These differences bear no simple relation to the size of a local authority or its social or geographical characteristics.

The main part of the report considers the proportions of children sent to special schools of various types. Previous *Trends* reports had shown a reduction of the proportion of pupils attending special schools throughout the 1980s and 1990s, after which this had remained constant for more than a decade. The current analysis shows, for the first time, a slight increase of 0.04% in the proportion of children sent to special schools.¹² There is a rise in the overall school population during these years, but these figures confirm that the percentage increase of pupils in special schools is greater than the percentage increase in total pupil population.

The report ranks all local authorities in England from the most inclusive to the most segregating. In 2013 the most inclusive authority was the London Borough of Newham, placing only 0.20% (the equivalent of 2 in every 1,000) of its 0-19 year olds in special schools; at the other end of the spectrum was Torbay Council, sending 1.4% (the equivalent of 14 in 1,000) to special schools. The average for England was 0.80% (the equivalent of 8 in every 1,000).

There is some evidence that the type of LA has a bearing on placement choices (for example, a higher proportion of unitary LAs than county authorities have the largest percentage of children in special schools). More empirical research is needed, however, to better understand this relationship. Regardless of this, the instance of Newham shows that it is possible for policy commitment to override other factors.

The rate of change is also considered. The overall percentage of pupils placed in special schools shows a slight increase (0.04%) over the years studied, yet the picture varies considerably in individual local authorities. 35 showed an overall decrease over the period; the greatest (-0.38%) in Brighton & Hove. 19 local authorities showed no, or very little, change. 93 showed an overall increase; the greatest (0.28%) was recorded in two local authorities: Torbay and Peterborough.

The appendices present figures for the percentages of 0-19 year-olds placed by each local authority in: special units, classes or resource bases attached to ordinary schools; pupil referral units (PRUs) and alternative provision academies; any provision off site ordinary schools; and any separate provision on and off site of ordinary schools. The report notes that pupils placed in special classes or resource bases within ordinary schools are not necessarily segregated from their peers, but there is no mechanism for collecting this information from schools.

It is hoped that the information in this report will help parents and professionals in their negotiations about individual children's school placements. This information can also support the efforts of those who want to lobby for change locally or nationally.

¹² Figures from the current analysis are not directly comparable with those of previous analyses, because of differences in the formulae used. Nonetheless, the information available provides a good indication of overall pattern.

Recommendations

1. National policy and legislation are put into practice in remarkably dissimilar ways by different local authorities. This report demonstrates that some regularly include children with statements in ordinary local schools, while others routinely send large proportions of children to special schools. If the promise of parental choice of school is to reflect a real choice, the Department for Education should issue a clear statement on what parents can expect from their local schools.
2. In the process of ratifying the UN Convention on the Rights of Persons with Disabilities in June 2009, the then government had issued the following declaration: “The United Kingdom Government is committed to continuing to develop an inclusive system where parents of disabled children have increasing access to mainstream schools and staff, which have the capacity to meet the needs of disabled children.” This declaration remains binding, but there is no evidence of any national effort in response to it. For this commitment to be honoured, the Department for Education should offer clear guidance, support and incentives for schools to develop more inclusive provision.
3. Current data collection practices for national, local and school level data, with regard to school placements of disabled children or those identified as having special educational needs, are not fit for purpose. No information is currently available on the proportion of time that children spend in different settings, for example on how time is divided between ordinary and special schools for children in dual placements. For children in special classes, units or resource bases in ordinary schools, no information is available on the proportion of time they spend alongside, or separated from, other pupils in the school. Such a time-based approach to data collection is already in use in USA data collection systems. We acknowledge that proximity to peers is only a limited indicator of inclusive provision, but is nevertheless an important one. We therefore recommend that the Department for Education collects time-based information from schools, to establish the extent to which children are learning and developing alongside, or separated from, their peers.

Appendix I: Percentage of 0-19 year-olds who are placed in: ii) special units, classes or resource bases attached to ordinary schools¹³

	2007	2009	2011	2013
ENGLAND	0.15	0.13	0.12	0.11
Barking and Dagenham	0.22	0.27	0.28	0.29
Barnet	0.18	0.16	0.16	0.08
Barnsley Council	0.07	0.09	0.12	0.12
Bath and North East Somerset	0.05	0.06	0.07	0.07
Bedford (after 2009)			0.16	0.07
Bedfordshire (until 2009)	0.12	0.11		
Bexley	0.18	0.16	0.18	0.19
Birmingham	0.20	0.19	0.17	0.18
Blackburn with Darwen	0.06	0.07	0.07	0.06
Blackpool	0.00	0.00	0.05	0.04
Bolton	0.04	0.03	0.02	0.05
Bournemouth Borough	0.09	0.07	0.05	0.05
Bracknell Forest	0.18	0.20	0.18	0.11
Bradford	0.07	0.08	0.11	0.15
Brent	0.13	0.11	0.10	0.10
Brighton and Hove	0.18	0.18	0.17	0.11
Bristol	0.07	0.09	0.16	0.10
Bromley	0.43	0.40	0.39	0.23
Buckinghamshire	0.23	0.24	0.22	0.14
Bury	0.18	0.09	0.10	0.13
Calderdale	0.07	0.06	0.03	0.06
Cambridgeshire	0.10	0.09	0.10	0.02
Camden	0.14	0.11	0.08	0.12
Central Bedfordshire (after 2009)			0.14	0.09
Cheshire (until 2009)	0.40	0.23		
Cheshire East (after 2009)			0.14	0.11
Cheshire West and Chester (after 2009)			0.14	0.13
Cornwall	0.16	0.15	0.16	0.11
Coventry	0.09	0.09	0.11	0.11
Croydon	0.16	0.20	0.25	0.18
Cumbria	0.16	0.00	0.00	0.00
Darlington	0.14	0.09	0.05	0.02
Derby	0.33	0.29	0.29	0.20
Derbyshire	0.14	0.14	0.13	0.13
Devon	0.06	0.05	0.05	0.03
Doncaster	0.00	0.03	0.02	0.00
Dorset	0.17	0.17	0.19	0.13
Dudley	0.12	0.11	0.07	0.08
Durham	0.15	0.13	0.12	0.07
Ealing	0.08	0.10	0.10	0.11
East Riding of Yorkshire	0.04	0.03	0.03	0.03
East Sussex	0.13	0.10	0.11	0.13
Enfield	0.04	0.06	0.08	0.08
Essex	0.08	0.08	0.08	0.08
Gateshead	0.24	0.19	0.11	0.13
Gloucestershire	0.03	0.01	0.00	0.00
Greenwich	0.28	0.29	0.22	0.12
Hackney	0.11	0.15	0.11	0.08
Halton	0.42	0.25	0.08	0.06
Hammersmith and Fulham	0.22	0.13	0.11	0.15
Hampshire	0.11	0.14	0.12	0.12
Haringey	0.04	0.16	0.17	0.15
Harrow	0.09	0.06	0.10	0.11
Hartlepool	0.26	0.20	0.23	0.10
Havering	0.06	0.04	0.03	0.05
Herefordshire	0.07	0.05	0.06	0.07
Hertfordshire	0.12	0.07	0.08	0.07
Hillingdon	0.17	0.17	0.16	0.08
Hounslow	0.25	0.27	0.34	0.25
Isle of Wight	0.08	0.06	0.04	0.04
Islington	0.11	0.10	0.10	0.10
Kensington and Chelsea	0.02	0.02	0.02	0.03
Kent	0.37	0.35	0.31	0.24
Kingston upon Hull	0.04	0.04	0.04	0.04
Kingston upon Thames	0.10	0.15	0.17	0.17
Kirklees	0.24	0.18	0.21	0.14
Knowsley	0.00	0.00	0.00	0.00
Lambeth	0.09	0.07	0.07	0.07
Lancashire	0.03	0.02	0.02	0.02
Leeds	0.10	0.08	0.09	0.06
Leicester	0.08	0.06	0.07	0.07
Leicestershire	0.16	0.18	0.16	0.18
Lewisham	0.11	0.12	0.17	0.16
Lincolnshire	0.17	0.03	0.02	0.02

Type of local authority:

Metropolitan authority

London borough

Unitary authority

County authority

Liverpool	0.18	0.13	0.10	0.07
Luton	0.17	0.19	0.17	0.11
Manchester	0.00	0.00	0.00	0.00
Medway	0.28	0.26	0.29	0.21
Merton	0.18	0.15	0.14	0.19
Middlesbrough	0.67	0.39	0.34	0.24
Milton Keynes	0.20	0.21	0.21	0.11
Newcastle upon Tyne	0.16	0.13	0.09	0.06
Newham	0.19	0.16	0.13	0.14
Norfolk	0.18	0.13	0.09	0.09
North East Lincolnshire	0.00	0.00	0.00	0.00
North Lincolnshire	0.00	0.00	0.00	0.00
North Somerset	0.07	0.06	0.05	0.05
North Tyneside	0.22	0.24	0.29	0.31
North Yorkshire	0.03	0.01	0.00	0.01
Northamptonshire	0.21	0.17	0.31	0.16
Northumberland	0.15	0.14	0.08	0.01
Nottingham	0.03	0.03	0.03	0.01
Nottinghamshire	0.01	0.01	0.00	0.00
Oldham	0.09	0.07	0.05	0.04
Oxfordshire	0.07	0.08	0.07	0.08
Peterborough	0.16	0.12	0.11	0.08
Plymouth	0.14	0.19	0.20	0.06
Poole	0.00	0.00	0.00	0.00
Portsmouth	0.09	0.17	0.12	0.10
Reading	0.22	0.25	0.21	0.14
Redbridge	0.10	0.10	0.12	0.13
Redcar and Cleveland	0.71	0.24	0.20	0.20
Richmond upon Thames	0.15	0.18	0.17	0.20
Rochdale	0.08	0.05	0.07	0.06
Rotherham	0.13	0.14	0.11	0.10
Rutland	0.27	0.26	0.33	0.14
Salford	0.10	0.08	0.08	0.06
Sandwell	0.11	0.09	0.11	0.13
Sefton	0.31	0.31	0.29	0.27
Sheffield	0.24	0.22	0.21	0.20
Shropshire	0.01	0.01	0.01	0.00
Slough	0.28	0.25	0.30	0.31
Solihull	0.24	0.23	0.22	0.06
Somerset	0.09	0.05	0.05	0.05
South Gloucestershire	0.18	0.19	0.19	0.19
South Tyneside	0.25	0.26	0.24	0.25
Southampton	0.05	0.06	0.07	0.04
Southend-on-Sea	0.13	0.13	0.12	0.08
Southwark	0.10	0.10	0.11	0.12
St. Helens	0.00	0.00	0.00	0.00
Staffordshire	0.02	0.02	0.01	0.01
Stockport	0.22	0.18	0.18	0.19
Stockton-on-Tees	0.21	0.16	0.18	0.21
Stoke-on-Trent	0.05	0.03	0.02	0.01
Suffolk	0.20	0.00	0.07	0.09
Sunderland	0.20	0.18	0.19	0.23
Surrey	0.19	0.20	0.18	0.14
Sutton	0.40	0.43	0.44	0.36
Swindon	0.19	0.15	0.13	0.12
Tameside	0.07	0.09	0.07	0.05
Telford and Wrekin	0.05	0.04	0.03	0.00
Thurrock	0.12	0.21	0.22	0.07
Torbay	0.17	0.20	0.17	0.06
Tower Hamlets	0.17	0.18	0.13	0.17
Trafford	0.25	0.24	0.00	0.14
Wakefield	0.13	0.13	0.13	0.12
Walsall	0.09	0.08	0.07	0.06
Waltham Forest	0.00	0.00	0.00	0.10
Wandsworth	0.11	0.12	0.11	0.13
Warrington	0.32	0.28	0.27	0.31
Warwickshire	0.02	0.01	0.01	0.01
West Berkshire	0.26	0.27	0.24	0.21
West Sussex	0.17	0.17	0.18	0.14
Westminster	0.13	0.11	0.10	0.11
Wigan	0.02	0.02	0.04	0.04
Wiltshire	0.33	0.44	0.38	0.22
Windsor and Maidenhead	0.14	0.15	0.12	0.07
Wirral	0.35	0.30	0.23	0.21
Wokingham	0.17	0.14	0.14	0.08
Wolverhampton	0.66	0.57	0.14	0.19
Worcestershire	0.15	0.17	0.18	0.09
York, City of	0.09	0.07	0.05	0.06

13 The City of London and the Isles of Scilly were excluded from this analysis, due to their small population size.

Appendix II: Percentage of 0-19 year-olds who are placed in: iii) pupil referral units (PRUs) and alternative provision academies¹⁴

	2007	2009	2011	2013
ENGLAND	0.018	0.015	0.013	0.011
Barking and Dagenham	0.021	0.010	0.003	0.002
Barnet	0.000	0.002	0.000	0.002
Barnsley Council	0.062	0.028	0.057	0.027
Bath and North East Somerset	0.000	0.000	0.000	0.000
Bedford (after 2009)			0.013	0.027
Bedfordshire (until 2009)	0.015	0.007		
Bexley	0.012	0.014	0.003	0.007
Birmingham	0.003	0.006	0.012	0.001
Blackburn with Darwen	0.012	0.014	0.014	0.019
Blackpool	0.059	0.051	0.037	0.022
Bolton	0.019	0.025	0.022	0.036
Bournemouth Borough	0.004	0.012	0.011	0.004
Bracknell Forest	0.034	0.017	0.010	0.005
Bradford	0.077	0.099	0.101	0.096
Brent	0.006	0.005	0.002	0.004
Brighton and Hove	0.000	0.000	0.000	0.010
Bristol	0.028	0.006	0.018	0.003
Bromley	0.002	0.011	0.002	0.017
Buckinghamshire	0.001	0.003	0.005	0.004
Bury	0.036	0.009	0.015	0.009
Calderdale	0.018	0.022	0.022	0.020
Cambridgeshire	0.100	0.072	0.076	0.000
Camden	0.013	0.031	0.041	0.060
Central Bedfordshire Council (after 2009)			0.006	0.000
Cheshire (until 2009)	0.000	0.000		
Cheshire East (after 2009)			0.000	0.000
Cheshire West and Chester (after 2009)			0.000	0.000
Cornwall	0.033	0.018	0.004	0.004
Coventry	0.071	0.033	0.002	0.002
Croydon	0.042	0.037	0.047	0.027
Cumbria	0.012	0.011	0.006	0.001
Darlington	0.033	0.021	0.006	0.000
Derby	0.062	0.043	0.010	0.008
Derbyshire	0.028	0.023	0.027	0.029
Devon	0.005	0.015	0.021	0.009
Doncaster	0.025	0.031	0.017	0.025
Dorset	0.021	0.010	0.016	0.016
Dudley	0.007	0.002	0.007	0.009
Durham	0.000	0.003	0.000	0.000
Ealing	0.021	0.043	0.031	0.026
East Riding of Yorkshire	0.002	0.000	0.002	0.002
East Sussex	0.010	0.003	0.004	0.005
Enfield	0.002	0.007	0.005	0.002
Essex	0.013	0.019	0.008	0.014
Gateshead	0.016	0.021	0.000	0.000
Gloucestershire	0.000	0.014	0.011	0.012
Greenwich	0.016	0.026	0.013	0.004
Hackney	0.042	0.057	0.037	0.040
Halton	0.042	0.029	0.005	0.000
Hammersmith and Fulham	0.078	0.068	0.046	0.048
Hampshire	0.016	0.024	0.004	0.002
Haringey	0.000	0.033	0.037	0.028
Harrow	0.009	0.020	0.013	0.013
Hartlepool	0.089	0.000	0.000	0.000
Havering	0.029	0.032	0.030	0.019
Herefordshire	0.025	0.000	0.004	0.025
Hertfordshire	0.004	0.001	0.003	0.002
Hillingdon	0.000	0.000	0.000	0.002
Hounslow	0.048	0.108	0.051	0.038
Isle of Wight	0.010	0.023	0.005	0.005
Islington	0.075	0.050	0.049	0.036
Kensington and Chelsea	0.000	0.005	0.000	0.005
Kent	0.006	0.005	0.007	0.009
Kingston upon Hull	0.022	0.011	0.005	0.018
Kingston upon Thames	0.000	0.000	0.000	0.000
Kirklees	0.026	0.017	0.013	0.006
Knowsley	0.040	0.013	0.000	0.000
Lambeth	0.003	0.000	0.012	0.010
Lancashire	0.009	0.013	0.008	0.007
Leeds	0.010	0.007	0.000	0.001
Leicester	0.010	0.006	0.005	0.008
Leicestershire	0.009	0.007	0.002	0.001
Lewisham	0.067	0.028	0.017	0.010
Lincolnshire	0.021	0.019	0.022	0.013

Type of local authority:

Metropolitan authority
London borough
Unitary authority
County authority

Appendix III: Percentage of 0-19 year-olds who are placed in iv) any provision off site ordinary schools (i+iii)¹⁵

	2007	2009	2011	2013
ENGLAND	0.77	0.78	0.80	0.81
Barking and Dagenham	0.62	0.59	0.64	0.59
Barnet	0.51	0.53	0.50	0.55
Barnsley Council	0.50	0.57	0.60	0.72
Bath and North East Somerset	0.66	0.71	0.78	0.82
Bedford (after 2009)			0.70	0.74
Bedfordshire (until 2009)	0.86	0.81		
Bexley	1.00	1.04	1.02	0.96
Birmingham	1.02	1.12	1.14	1.01
Blackburn with Darwen	0.72	0.66	0.62	0.55
Blackpool	1.04	1.02	0.99	1.02
Bolton	0.67	0.67	0.70	0.75
Bournemouth Borough	0.70	0.82	0.86	0.82
Bracknell Forest	0.90	0.90	0.92	1.02
Bradford	0.62	0.64	0.63	0.65
Brent	0.89	0.98	1.06	0.90
Brighton and Hove	1.14	0.96	0.84	0.77
Bristol	0.75	0.87	0.82	0.76
Bromley	0.78	0.79	0.89	0.83
Buckinghamshire	0.94	0.92	1.01	1.04
Bury	0.68	0.68	0.66	0.74
Calderdale	0.58	0.59	0.65	0.63
Cambridgeshire	0.72	0.65	0.66	0.67
Camden	0.77	0.80	0.78	0.82
Central Bedfordshire Council (after 2009)			0.78	0.78
Cheshire (until 2009)	0.66	0.66		
Cheshire East (after 2009)			0.64	0.66
Cheshire West and Chester (after 2009)			0.73	0.82
Cornwall	0.45	0.42	0.38	0.40
Coventry	1.16	1.07	1.09	1.03
Croydon	1.01	1.04	1.10	1.05
Cumbria	0.43	0.45	0.47	0.51
Darlington	0.88	0.90	0.88	0.90
Derby	0.73	0.78	0.87	0.92
Derbyshire	0.52	0.50	0.51	0.52
Devon	0.61	0.60	0.64	0.66
Doncaster	0.82	0.77	0.75	0.76
Dorset	0.84	0.81	0.84	0.83
Dudley	0.93	0.96	1.01	1.00
Durham	1.06	1.07	1.07	1.13
Ealing	0.90	0.92	0.96	0.88
East Riding of Yorkshire	0.49	0.51	0.54	0.53
East Sussex	0.90	0.88	0.90	0.92
Enfield	0.75	0.71	0.66	0.64
Essex	0.64	0.64	0.65	0.70
Gateshead	0.98	0.92	0.97	1.01
Gloucestershire	0.65	0.67	0.71	0.75
Greenwich	0.64	0.68	0.65	0.63
Hackney	0.73	0.70	0.67	0.61
Halton	1.17	1.01	0.94	0.95
Hammersmith and Fulham	0.84	0.76	0.70	0.65
Hampshire	0.85	0.86	0.88	0.86
Haringey	0.80	0.77	0.79	0.69
Harrow	0.69	0.81	0.87	0.84
Hartlepool	0.70	0.66	0.64	0.85
Havering	0.53	0.52	0.51	0.53
Herefordshire	0.54	0.55	0.65	0.73
Hertfordshire	0.83	0.83	0.77	0.74
Hillingdon	0.87	0.87	0.88	0.92
Hounslow	0.97	0.97	0.88	0.92
Isle of Wight	0.69	0.80	0.82	0.83
Islington	0.86	0.85	0.85	0.80
Kensington and Chelsea	0.50	0.52	0.49	0.60
Kent	0.79	0.84	0.88	0.95
Kingston upon Hull	0.68	0.70	0.78	0.85
Kingston upon Thames	0.73	0.70	0.72	0.80
Kirklees	0.62	0.63	0.58	0.60
Knowsley	1.25	1.20	1.15	1.22
Lambeth	0.74	0.83	0.96	0.88
Lancashire	0.92	0.96	0.97	0.99
Leeds	0.47	0.51	0.53	0.53
Leicester	0.89	0.93	0.95	0.90
Leicestershire	0.55	0.60	0.65	0.75
Lewisham	1.16	0.98	0.91	0.89
Lincolnshire	0.90	0.92	1.03	1.06

Type of local authority:

Metropolitan authority
London borough
Unitary authority
County authority

Liverpool	0.001	0.000	0.001	0.000
Luton	0.003	0.003	0.000	0.003
Manchester	0.000	0.010	0.009	0.015
Medway	0.070	0.100	0.097	0.080
Merton	0.011	0.000	0.000	0.006
Middlesbrough	0.027	0.011	0.004	0.019
Milton Keynes	0.003	0.002	0.011	0.007
Newcastle upon Tyne	0.005	0.000	0.000	0.000
Newham	0.067	0.008	0.008	0.008
Norfolk	0.031	0.025	0.033	0.024
North East Lincolnshire	0.017	0.035	0.008	0.010
North Lincolnshire	0.010	0.000	0.000	0.000
North Somerset	0.009	0.013	0.006	0.013
North Tyneside	0.003	0.003	0.000	0.000
North Yorkshire	0.001	0.001	0.001	0.005
Northamptonshire	0.028	0.018	0.012	0.012
Northumberland	0.000	0.000	0.000	0.000
Nottingham	0.000	0.004	0.007	0.002
Nottinghamshire	0.017	0.021	0.012	0.003
Oldham	0.000	0.000	0.000	0.000
Oxfordshire	0.027	0.021	0.013	0.011
Peterborough	0.111	0.030	0.045	0.006
Plymouth	0.020	0.010	0.005	0.020
Poole	0.000	0.000	0.000	0.000
Portsmouth	0.015	0.000	0.000	0.000
Reading	0.000	0.000	0.000	0.049
Redbridge	0.015	0.009	0.007	0.010
Redcar and Cleveland	0.023	0.000	0.005	0.000
Richmond upon Thames	0.000	0.000	0.000	0.000
Rochdale	0.014	0.014	0.000	0.000
Rotherham	0.005	0.008	0.016	0.032
Rutland	0.000	0.000	0.000	0.000
Salford	0.011	0.003	0.003	0.007
Sandwell	0.008	0.004	0.017	0.011
Sefton	0.002	0.000	0.000	0.000
Sheffield	0.010	0.003	0.000	0.002
Shropshire	0.013	0.007	0.013	0.018
Slough	0.000	0.039	0.038	0.010
Solihull	0.014	0.049	0.058	0.064
Somerset	0.004	0.006	0.011	0.016
South Gloucestershire	0.033	0.019	0.028	0.016
South Tyneside	0.020	0.000	0.000	0.005
Southampton	0.000	0.003	0.000	0.005
Southend-on-Sea	0.004	0.010	0.004	0.004
Southwark	0.047	0.007	0.008	0.008
St. Helens	0.003	0.000	0.012	0.010
Staffordshire	0.022	0.013	0.011	0.010
Stockport	0.015	0.007	0.012	0.015
Stockton-on-Tees	0.003	0.000	0.003	0.008
Stoke-on-Trent	0.008	0.015	0.000	0.000
Suffolk	0.029	0.032	0.026	0.033
Sunderland	0.010	0.000	0.000	0.000
Surrey	0.016	0.008	0.006	0.003
Sutton	0.003	0.006	0.031	0.029
Swindon	0.030	0.038	0.053	0.013
Tameside	0.007	0.003	0.003	0.000
Telford and Wrekin	0.046	0.028	0.009	0.003
Thurrock	0.063	0.064	0.051	0.044
Torbay	0.031	0.005	0.000	0.011
Tower Hamlets	0.038	0.022	0.023	0.019
Trafford	0.023	0.015	0.007	0.003
Wakefield	0.005	0.010	0.005	0.000
Walsall	0.002	0.002	0.000	0.000
Waltham Forest	0.010	0.005	0.002	0.010
Wandsworth	0.010	0.013	0.021	0.023
Warrington	0.000	0.000	0.000	0.000
Warwickshire	0.013	0.028	0.011	0.000
West Berkshire	0.016	0.018	0.010	0.023
West Sussex	0.003	0.002	0.006	0.006
Westminster	0.000	0.000	0.004	0.023
Wigan	0.002	0.002	0.012	0.007
Wiltshire	0.003	0.004	0.001	0.000
Windsor and Maidenhead	0.004	0.000	0.004	0.008
Wirral	0.010	0.011	0.007	0.002
Wokingham	0.000	0.000	0.000	0.004
Wolverhampton	0.060	0.003	0.061	0.040
Worcestershire	0.004	0.001	0.001	0.002
York, City of	0.074	0.010	0.091	0.071

14 The City of London and the Isles of Scilly were excluded from this analysis, due to their small population size.

Liverpool	0.81	0.89	0.91	0.98
Luton	0.65	0.59	0.64	0.63
Manchester	0.91	0.90	0.93	0.83
Medway	0.91	1.02	1.09	0.97
Merton	0.82	0.77	0.74	0.87
Middlesbrough	1.09	1.10	1.13	1.25
Milton Keynes	1.04	1.00	1.03	1.02
Newcastle upon Tyne	0.84	0.87	0.83	0.84
Newham	0.26	0.19	0.23	0.21
Norfolk	0.61	0.67	0.69	0.68
North East Lincolnshire	0.72	0.83	0.84	0.88
North Lincolnshire	0.74	0.76	0.85	0.82
North Somerset	0.56	0.59	0.64	0.67
North Tyneside	0.89	0.92	0.95	1.02
North Yorkshire	0.55	0.56	0.54	0.54
Northamptonshire	0.68	0.68	0.74	0.74
Northumberland	0.78	0.82	0.89	0.93
Nottingham	0.46	0.49	0.53	0.50
Nottinghamshire	0.50	0.49	0.52	0.55
Oldham	0.58	0.65	0.79	0.81
Oxfordshire	0.56	0.55	0.55	0.61
Peterborough	0.97	0.96	1.11	1.15
Plymouth	0.87	0.92	0.92	0.94
Poole	0.66	0.66	0.77	0.88
Portsmouth	0.90	0.92	0.84	0.78
Reading	0.88	0.85	0.97	0.96
Redbridge	0.77	0.76	0.74	0.71
Redcar and Cleveland	0.89	0.98	1.04	1.13
Richmond upon Thames	0.64	0.60	0.62	0.62
Rochdale	0.86	0.82	0.81	0.82
Rotherham	0.94	0.91	0.93	0.94
Rutland	0.29	0.35	0.27	0.41
Salford	1.07	1.14	1.17	1.05
Sandwell	0.54	0.52	0.60	0.60
Sefton	0.75	0.81	0.81	0.88
Sheffield	0.75	0.77	0.73	0.73
Shropshire	0.58	0.59	0.67	0.74
Slough	0.96	0.96	0.92	0.78
Solihull	0.90	0.97	1.11	1.19
Somerset	0.48	0.49	0.46	0.46
South Gloucestershire	0.65	0.67	0.67	0.70
South Tyneside	1.30	1.19	1.21	1.20
Southampton	0.62	0.63	0.63	0.66
Southend-on-Sea	1.04	1.14	1.07	1.07
Southwark	0.87	0.84	0.89	0.85
St. Helens	0.70	0.74	0.77	0.83
Staffordshire	0.97	0.93	0.99	1.06
Stockport	0.74	0.71	0.75	0.78
Stockton-on-Tees	1.08	1.10	1.07	1.13
Stoke-on-Trent	1.18	1.20	1.13	1.10
Suffolk	0.61	0.61	0.59	0.61
Sunderland	0.92	0.88	0.94	1.00
Surrey	0.86	0.86	0.88	0.88
Sutton	0.90	0.92	0.97	0.96
Swindon	0.85	0.95	0.95	0.89
Tameside	0.76	0.75	0.71	0.78
Telford and Wrekin	1.00	1.12	1.14	1.18
Thurrock	0.86	0.91	0.90	0.94
Torbay	1.15	1.12	1.20	1.41
Tower Hamlets	0.68	0.66	0.77	0.77
Trafford	1.01	0.98	0.92	0.98
Wakefield	0.55	0.58	0.56	0.56
Walsall	0.71	0.75	0.82	0.90
Waltham Forest	0.97	0.94	0.95	0.90
Wandsworth	0.97	0.90	0.94	0.85
Warrington	0.73	0.66	0.61	0.62
Warwickshire	0.79	0.93	0.96	1.02
West Berkshire	0.72	0.66	0.67	0.75
West Sussex	0.88	0.85	0.92	0.95
Westminster	0.66	0.64	0.75	0.67
Wigan	0.92	0.86	0.83	0.81
Wiltshire	0.60	0.53	0.56	0.56
Windsor and Maidenhead	0.60	0.58	0.61	0.72
Wirral	1.36	1.38	1.28	1.28
Wokingham	0.57	0.58	0.65	0.71
Wolverhampton	1.13	1.07	1.19	1.19
Worcestershire	0.82	0.82	0.87	0.90
York, City of	0.54	0.45	0.49	0.48

15 The City of London and the Isles of Scilly were excluded from this analysis, due to their small population size.

Appendix IV: Percentage of 0-19 year-olds who are placed in v) any separate provision on and off site of ordinary schools (i+ii+iii)¹⁶

	2007	2009	2011	2013
ENGLAND	0.92	0.91	0.92	0.91
Barking and Dagenham	0.84	0.86	0.92	0.88
Barnet	0.69	0.68	0.66	0.63
Barnsley Council	0.57	0.66	0.71	0.84
Bath and North East Somerset	0.71	0.76	0.84	0.89
Bedford (after 2009)			0.86	0.81
Bedfordshire (until 2009)	0.98	0.92		
Bexley	1.17	1.19	1.20	1.15
Birmingham	1.22	1.32	1.30	1.19
Blackburn with Darwen	0.77	0.73	0.69	0.61
Blackpool	1.04	1.02	1.04	1.06
Bolton	0.71	0.70	0.71	0.79
Bournemouth Borough	0.79	0.89	0.91	0.87
Bracknell Forest	1.08	1.10	1.11	1.13
Bradford	0.68	0.72	0.74	0.80
Brent	1.02	1.09	1.15	1.00
Brighton and Hove	1.32	1.14	1.00	0.89
Bristol	0.82	0.96	0.98	0.86
Bromley	1.21	1.19	1.27	1.06
Buckinghamshire	1.17	1.16	1.23	1.18
Bury	0.86	0.77	0.76	0.87
Calderdale	0.65	0.65	0.68	0.69
Cambridgeshire	0.82	0.74	0.76	0.69
Camden	0.91	0.91	0.86	0.94
Central Bedfordshire Council (after 2009)			0.92	0.86
Cheshire (until 2009)	1.06	0.90		
Cheshire East (after 2009)			0.78	0.77
Cheshire West and Chester (after 2009)			0.87	0.95
Cornwall	0.61	0.57	0.54	0.51
Coventry	1.25	1.17	1.20	1.14
Croydon	1.17	1.25	1.34	1.22
Cumbria	0.59	0.45	0.47	0.51
Darlington	1.02	0.99	0.93	0.92
Derby	1.06	1.07	1.16	1.12
Derbyshire	0.67	0.64	0.64	0.66
Devon	0.67	0.66	0.69	0.69
Doncaster	0.82	0.80	0.78	0.76
Dorset	1.01	0.98	1.03	0.96
Dudley	1.05	1.06	1.08	1.09
Durham	1.21	1.20	1.19	1.20
Ealing	0.98	1.02	1.06	0.99
East Riding of Yorkshire	0.52	0.54	0.57	0.56
East Sussex	1.04	0.97	1.02	1.05
Enfield	0.79	0.77	0.74	0.72
Essex	0.72	0.71	0.73	0.77
Gateshead	1.22	1.10	1.09	1.14
Gloucestershire	0.69	0.69	0.71	0.75
Greenwich	0.92	0.97	0.87	0.75
Hackney	0.84	0.85	0.79	0.69
Halton	1.58	1.25	1.02	1.01
Hammersmith and Fulham	1.06	0.90	0.82	0.81
Hampshire	0.96	0.99	1.00	0.98
Haringey	0.85	0.93	0.96	0.84
Harrow	0.77	0.87	0.97	0.96
Hartlepool	0.95	0.85	0.87	0.95
Havering	0.59	0.55	0.55	0.58
Herefordshire	0.61	0.61	0.72	0.80
Hertfordshire	0.95	0.91	0.85	0.81
Hillingdon	1.03	1.05	1.03	1.00
Hounslow	1.22	1.24	1.22	1.17
Isle of Wight	0.77	0.85	0.87	0.87
Islington	0.97	0.95	0.95	0.90
Kensington and Chelsea	0.52	0.54	0.52	0.63
Kent	1.16	1.19	1.19	1.20
Kingston upon Hull	0.72	0.75	0.82	0.90
Kingston upon Thames	0.83	0.85	0.89	0.97
Kirklees	0.87	0.81	0.79	0.74
Knowsley	1.25	1.20	1.15	1.22
Lambeth	0.82	0.90	1.03	0.95
Lancashire	0.95	0.99	0.99	1.01
Leeds	0.56	0.59	0.62	0.59
Leicester	0.96	0.99	1.02	0.97
Leicestershire	0.71	0.77	0.82	0.92
Lewisham	1.26	1.10	1.08	1.05
Lincolnshire	1.07	0.95	1.04	1.07

Type of local authority:

Metropolitan authority
London borough
Unitary authority
County authority

Method and data accuracy

We were unable to use in the analysis reported here the original 1983 formula which we had used for almost two decades, as the information required for this was not available to us. We were also unable to access data about type of school placements for pupils without statements. Though current legislation ensures that very few, if any, pupils without a statement would be placed in special schools, this lack of information dictated that we had to use data about the placement of pupils issued with statements, not about placement itself. It seems paradoxical that, in an age of measurement and data collection, it proved impossible to access data that had been available in the 1980s.

Formula used in this analysis:

The proportion of pupils in special schools or other settings is calculated for each local authority by: taking **the number of this LA's pupils aged 0-19 who have a statement of special educational needs and are placed in this or another LA's schools special schools/other separate settings**, as described by each element in the formula (numerator), dividing this by **the total number of children aged 0-19 for whom the local authority has responsibility** (denominator), then multiplying the result by 100 to express it as a percentage.

The new formula consists of several elements, described in the table below. Element (i) is discussed in the main part of this report; information on elements (ii)-(v) is presented in appendices I to IV on pages 17-20.

Assumptions made in using this formula:

The formula does not include pupils with statements who go to independent schools that are not special schools; this information was not available to us.

The SEN2 data covers all pupils with statements in a LA wherever they go to school, whether in that LA area or in another LA (this takes into account 'imports'/'exports' of pupils)

When there are dual placements we count the main provision as sole placement, following current Government data collection practice.

Local authority size and reorganisation

The City of London and The Isles of Scilly are not included in this report because their small size makes the figures statistically insignificant.

Some local authority reorganisation took place in 2009, during the period under review; these changes are reflected in the report. Bedfordshire County Council became the unitary authorities of i. Central Bedfordshire and ii. Bedford. Cheshire County Council became the unitary authorities i. Cheshire East and ii. Cheshire West and Chester. Five local authorities changed from being county councils to unitary authorities in 2009. These are Cornwall, Durham, Northumberland, Shropshire and Wiltshire. (Where we refer to authority types in the report we use post 2009 status.)

Element of formula	i. maintained, non-maintained & independent special schools and special academies	ii. separate special units, classes or resource bases attached to ordinary schools	iii. pupil referral units (PRUs) and alternative provision academies	iv. any provision off site ordinary schools (i+iii)	v. any separate provision on and off site of ordinary schools (i+ii+iii)
Source of numerator data	These data come from DfE statistics collected in Form SEN2 January of the identified year (this is mid school year data and relates to the total number of pupils in all schools collected in the preceding year as used in denominator.)			These data come from combining totals from the previous columns.	
Numerator data	a. Maintained special schools b. Non-maintained special schools c. Independent special schools d. Special academies and free schools (where applicable – 2013 only)	a. Resourced provision in maintained ordinary schools b. SEN units in maintained ordinary schools	a. PRUs b. Alternative provision academies (where applicable – 2013 only)	i. Pupils in separate special schools of various types iii. Pupils in PRUs/ alternative provision academies	i. Pupils in separate special schools of various types ii. Pupils in separate special units/classes/ resources on site of ordinary schools iii. Pupils in PRUs/alternative provision academies
Source of denominator data	This is the total number of children and young people from birth (age 0) to year 14 (age 19) for whom the LA is responsible. These data come from the Office for National Statistics mid-year population estimates (of the preceding year to the SEN2 form), from the table " <i>Mid-year Population Estimates: Single year of age and sex for local authorities in the United Kingdom; estimated resident population</i> ". Totals for ages 0-19 were calculated from this dataset. (These relate to the SEN data collected mid-school year, for the period from September to July of the previous academic year.)				

Liverpool	0.98	1.02	1.01	1.04
Luton	0.82	0.77	0.82	0.74
Manchester	0.91	0.90	0.93	0.83
Medway	1.19	1.27	1.38	1.18
Merton	1.00	0.92	0.88	1.06
Middlesbrough	1.76	1.49	1.47	1.49
Milton Keynes	1.25	1.21	1.25	1.12
Newcastle upon Tyne	1.00	1.00	0.92	0.90
Newham	0.45	0.34	0.36	0.35
Norfolk	0.79	0.80	0.77	0.78
North East Lincolnshire	0.72	0.83	0.84	0.88
North Lincolnshire	0.74	0.76	0.85	0.82
North Somerset	0.63	0.65	0.69	0.72
North Tyneside	1.11	1.17	1.24	1.33
North Yorkshire	0.59	0.57	0.54	0.56
Northamptonshire	0.88	0.86	1.05	0.90
Northumberland	0.93	0.96	0.97	0.93
Nottingham	0.49	0.52	0.56	0.52
Nottinghamshire	0.51	0.50	0.52	0.55
Oldham	0.67	0.72	0.84	0.86
Oxfordshire	0.63	0.63	0.63	0.69
Peterborough	1.13	1.07	1.22	1.23
Plymouth	1.02	1.11	1.12	1.00
Poole	0.66	0.66	0.77	0.88
Portsmouth	0.99	1.10	0.96	0.88
Reading	1.10	1.10	1.18	1.10
Redbridge	0.87	0.86	0.87	0.84
Redcar and Cleveland	1.60	1.22	1.24	1.33
Richmond upon Thames	0.78	0.79	0.79	0.81
Rochdale	0.94	0.88	0.87	0.87
Rotherham	1.07	1.05	1.05	1.05
Rutland	0.56	0.61	0.60	0.55
Salford	1.17	1.22	1.25	1.11
Sandwell	0.65	0.61	0.70	0.73
Sefton	1.07	1.12	1.11	1.15
Sheffield	0.98	0.99	0.94	0.94
Shropshire	0.59	0.60	0.68	0.74
Slough	1.24	1.21	1.22	1.09
Solihull	1.14	1.20	1.33	1.25
Somerset	0.57	0.54	0.50	0.51
South Gloucestershire	0.83	0.87	0.86	0.89
South Tyneside	1.56	1.45	1.44	1.45
Southampton	0.67	0.69	0.69	0.70
Southend-on-Sea	1.17	1.28	1.18	1.15
Southwark	0.98	0.94	1.00	0.97
St. Helens	0.70	0.74	0.77	0.83
Staffordshire	0.99	0.95	1.00	1.07
Stockport	0.96	0.89	0.93	0.98
Stockton-on-Tees	1.30	1.26	1.25	1.33
Stoke-on-Trent	1.23	1.23	1.14	1.11
Suffolk	0.81	0.61	0.66	0.70
Sunderland	1.12	1.07	1.12	1.23
Surrey	1.05	1.06	1.06	1.03
Sutton	1.31	1.35	1.42	1.33
Swindon	1.04	1.10	1.08	1.01
Tameside	0.82	0.84	0.78	0.84
Telford and Wrekin	1.06	1.16	1.17	1.18
Thurrock	0.99	1.12	1.12	1.00
Torbay	1.32	1.32	1.37	1.47
Tower Hamlets	0.85	0.84	0.90	0.95
Trafford	1.26	1.22	0.92	1.12
Wakefield	0.68	0.71	0.69	0.68
Walsall	0.80	0.83	0.89	0.96
Waltham Forest	0.97	0.95	0.95	0.99
Wandsworth	1.08	1.01	1.06	0.98
Warrington	1.05	0.94	0.88	0.94
Warwickshire	0.81	0.94	0.97	1.03
West Berkshire	0.98	0.93	0.91	0.96
West Sussex	1.05	1.01	1.10	1.10
Westminster	0.79	0.75	0.85	0.78
Wigan	0.94	0.87	0.87	0.85
Wiltshire	0.93	0.97	0.93	0.79
Windsor and Maidenhead	0.74	0.73	0.74	0.79
Wirral	1.71	1.68	1.51	1.48
Wokingham	0.74	0.71	0.78	0.80
Wolverhampton	1.79	1.64	1.33	1.38
Worcestershire	0.97	0.98	1.05	0.99
York, City of	0.64	0.52	0.54	0.54

16 The City of London and the Isles of Scilly were excluded from this analysis, due to their small population size.

This report presents school placement trends (i.e. the proportion of children sent to special schools or other separate settings) from 2007 to 2013 for all local authorities in England. It also ranks all local authorities from the most inclusive to the most segregating, with regard to school placement trends and their rate of change. CSIE has been monitoring special school placements since 1983.

Like previous issues in this series, this report reveals huge variation in the way local authorities respond to diversity; some rely more on ordinary local schools, while others regularly send high proportions of children to separate settings. These differences bear no simple relation to the size of a local authority or its social or geographical characteristics.

It is hoped that the information in this report will help parents and professionals in their negotiations about individual children's school placements. This information can also support the efforts of those who want to lobby for change locally or nationally.



Thank you to the Esmée Fairbairn Foundation for providing the funding for this project.